

---

## Aspiring Minds' Campus Analysis Report

### Dr Ambedkar Institute of engineering (B.Tech/B.E - 2022)



Aspiring Minds Assessment Pvt. Ltd.

### Study of Students' Employability and their Performance in AMCAT

## TABLE OF CONTENTS

---

Purpose of this Report .....	3
Introduction .....	5
Score Interpretation .....	7
Percentile Interpretation .....	7
Section No. 1 - Students\' Capability and Training Need Analysis .....	8
I. Inferences .....	9
II. Performance Summary .....	10
III. Training Suggestion .....	11
Section No. 2 - Students\' Employability .....	12
I. Perspective on Corporate Shortlisting Criteria .....	12
II. Employability Prospects .....	13
III. Bird's-eye-view of Employability .....	14
Section No. 3 - Intra Campus Comparison .....	15
I. Stream Comparison .....	15
Section No. 4 - Aspiring Minds' Concluding Words .....	19
Section No. 5 - Appendix .....	20
I. Candidates Score Table .....	20
II. Statistical Significance (Confidence) .....	39
III. National Average (Norm) .....	39
IV. Variance (Standard Deviation) .....	39
V. About Aspiring Minds .....	39

## Purpose of this Report

---

The Aspiring Minds Campus Analysis Report provides a detailed analysis of the student quality and their employability in the industry. Our aim is to produce a report which is useful to the campus and includes a comprehensive comparison across different degrees, streams and batches. All such analysis will serve as an employability checkup for students and accordingly, the administration can prioritize its efforts to increase the overall student employability.

The various sections of this report give a broad view on numerous aspects related to the performance of students. These sections contain tables and charts which have been constructed after an in-depth analysis of AMCAT assessment data collected from your campus. We evaluate your students' performance in comparison to the nation-wide norms, which are calculated from a sample of entry-level job-aspirants over 22 states across India. This comparison reveals those areas in which your students fare better (or otherwise) than the average student assessed by us, and determines the employability of the students in diverse industries. This report will give a clear picture of the employability status of students eligible for the listed companies and also help the institute to improve on the weak areas figured by Aspiring Minds' analysis.

We also provide an intra-campus analysis to give an overview of the characteristics of top performing students in comparison to the rest, such that appropriate measures can be taken to help the low performers fare better.

On the basis of our analysis, we suggest certain recommendations for your campus. We are certain that these recommendations will help Dr Ambedkar Institute of engineering march towards its goal of providing excellent education to the students, which will result in better employability. Our recommendations, if properly implemented, will also help increase the standing of the campus amongst prospective students.

### Data Snapshot

Campus	Dr Ambedkar Institute of engineering
Date of testing	23rd and 24th August 2019
Degree tested	B.Tech/B.E (790 students)
<b>Number of students compared in each stream</b>	
Computer Science & Engineering	164 students
Information Science Engineering	52 students
Electronics and Communication Engineering	152 students
Electronics and Instrumentation Engineering	32 students
Telecommunication Engineering	42 students
Electronics and Electrical Engineering	57 students
Mechanical Engineering	124 students
Civil Engineering	95 students
Biomedical Engineering	19 students
Industrial Engineering and Management	32 students
Other	21 students

*Note: some students either did not enter their stream or entered it incorrectly. These students have not been included in any stream. Thus total students tested could be more than students in all reported streams.*

## Introduction

---

This report is based on the results of AMCAT assessment conducted at your campus on 23rd and 24th August 2019 where a total of 790 students were tested. AMCAT is a two and half-hour adaptive test with multiple modules including aptitude, domain skills and personality assessment. It is India's largest employability test and is taken by more than 30,000 students every month. Being India's only adaptive employability test, it is used as a benchmark for hiring by several companies across India. The details of AMCAT assessment are as follows:

AMCAT Modules
I. English Comprehension
II. Quantitative Ability
III. Logical Ability
IV. Aspiring Minds Personality Inventory (AMPI)

### I. English Comprehension

Familiarity with the English Language in its various nuances is an essential skill, especially in the current climate of global networking. Ideally, any recruitment should involve a test of skills in handling the language in ways that promote the objectives of the company. Needless to state, an appropriate test is necessary.

Our English test uses a variety of internationally standardized resources for framing questions aimed at determining the candidate's ability to a) understand the written text (b) comprehend the spoken word and (c) communicate effectively through written documents. The test broadly covers the following areas:

- a. A wide-ranging vocabulary to cope with general and specific terminology.
- b. Syntax and sentence structure, the incorrect use of which distorts meaning and becomes a communication hurdle.
- c. Comprehension exercises designed to test a candidate's ability to read fluently and understand correctly.
- d. The ability to understand and use suitable phrases, which enrich the meaning of what is conveyed.

Time management and accuracy in conformity with the examiner's criteria.

### II. Quantitative Ability

The Quantitative Ability assesses the ability of the candidate in following two aspects:

- a. Basic understanding of numbers and applications  
This section tests whether the candidate has understanding of basic number system, i.e., fractions, decimals, negative, positive, odd, even numbers, rational numbers, etc. The candidate should know how to do basic operations on these

numbers, understand concepts of factors/divisibility and have good practice of algebra. Apart from operations on numbers, the candidate should know how to convert a real-world problem into equations, which is to be solved to find an unknown quantity. The candidate is tested on Word Problems representing various scenarios to assess the same.

b. Analytical/Engineering Maths

These are aspects of mathematics needed for Engineering disciplines and data analysis. This includes permutation-combination, probability and understanding of logarithms.

### III. Logical Ability

The Logical Ability section assesses the capacity of an individual to interpret things objectively, to be able to perceive and interpret trends to make generalizations and be able to analyze assumptions behind an argument/statement. These abilities are primary for success of a candidate in the industry. Specifically, these are divided into following sections:

- a. Deductive Reasoning: Assesses the ability to synthesize information and derive conclusions.
- b. Inductive Reasoning: Assesses the ability to learn by example, imitation or hit-and-trial. This also provides an indication of how creative the individual is.
- c. Subjective Reasoning: Assesses the critical thinking ability of an individual to see through loopholes in an argument or group of statements.

All these abilities are tested both using numerical and verbal stimuli. Coachable questions have been identified and removed.

### IV. AMPI: Aspiring Minds Personality Inventory

It is the first personality inventory designed for personality analysis of Indian college graduates for the purpose of inputs to corporate personnel selection. AMPI is based on the five factor model, which is by far the only scientifically validated and reliable personality model. Several scientific studies across the world have shown that different combinations of the five factor personality traits strongly correlate to different job profiles and predict long term job performance reliably. AMPI analysis will be a worthwhile objective input to the corporate selection process and help find better matches to job profiles. The AMPI questionnaire asks for candidate's reaction under various scenarios, his/her beliefs, likes-dislikes to ascertain his/her personality factors. Factors map to traits such as candidate motivation, self-discipline, sociability, persistence, confidence, emotional stability, etc. which both intuitively and scientifically map to job requirements. AMPI builds in a strong proprietary methodology to control distortions due to social desirability and answer-faking.

AMPI has been designed specifically keeping the fresh Indian graduates in mind. Context is very important in design of items. AMPI items take into consideration the cultural sensibilities of Indians, the scenarios students face at college/home, also depending on the socio-economic status of the target population. This brings AMPI into a unique position as

compared to generic/Western inventories, which do not suit our target population and fail miserably.

AMPI's scoring is based on statistical techniques of factor analysis, polytomous item analysis and structural modeling. Norms have been set on large candidate assessment done on final year graduates. Testforms are auto-generated such that each factor can be reliably predicted in feasible amount of time. Test-retest reliability and test validity are statistically guaranteed.

AMPI traits are:

- a. Extraversion
- b. Conscientiousness
- c. Emotional Stability
- d. Openness to Experience
- e. Agreeableness

## **Score Interpretation**

All scores lie between 100 and 900. The scores are normalized on a Gaussian curve using statistical techniques. The scores follow global standards of validity and reliability. They are valid for three years and remain consistent on repeat testing unless the candidate's ability improves because of sustained long term efforts.

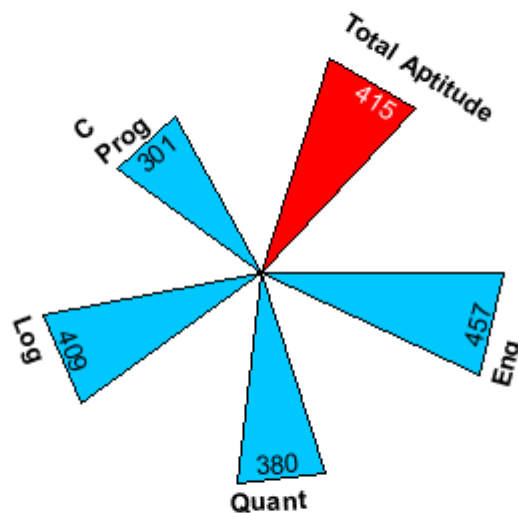
## **Percentile Interpretation**

The percentile of the candidate is calculated over a National average group based on the percentile of all students tested by Aspiring Minds. Several statistical studies conducted demonstrate clearly that the percentiles are stable for a year and will not vary more than two percentile points. The percentile is a very important metric and gives an idea of the candidate's rank in comparison with all graduates nationwide.

## Section 1 - Students' Capability and Training Need Analysis

---

This section shows the overall performance of the campus students, along with their average and standard deviation in each module. In Campus Aptitude and Skill Chart below, BLUE triangles represent average score of your campus in each module. The RED triangle represents Total Aptitude score, which comprises of English, Quantitative Ability and Logical Ability scores.



Campus Aptitude And Skill Chart

The Campus Ability Table below shows the campus average scores (percentiles) and their standard deviations in comparison with the National norms. It also indicates if the difference between the Campus Average score and the National Average score is significant and if so, at what confidence level. Norm is the National Average of all the candidates tested on AMCAT. Confidence level refers to the likelihood (ranging from 0 to 100%) that the results observed in the study are real, and not due to chance. In this analysis, if confidence level is less than 90%, it indicates that the difference between the Campus Average and the National Average is not significant and that both the scores are equivalent. For confidence level greater than or equal to 90%, the difference between the Campus Average and the National Average is considered significant. If the difference is positive, on an average, the campus students are performing better than the National Average and vice versa.



**Campus Ability Table**

Modules Attempted	Campus Average Percentile	Campus Average (Std. Dev.)	National Average (Std. Dev.)	Difference (Campus - National)	Confidence	Is Significant? <sup>1</sup>
English Comprehension	43%	457 (106)	475 (100)	-18	100%	Yes
Quantitative Ability	16%	380 (120)	495 (115)	-115	100%	Yes
Logical Ability	29%	409 (76)	465 (101)	-56	100%	Yes
C Programming	11%	301 (92)	425 (101)	-124	100%	Yes
<b>Total Aptitude</b>	<b>27%</b>	<b>415 (81)</b>	<b>478 (105)</b>	<b>-63</b>	<b>100%</b>	<b>Yes</b>

<sup>1</sup> if confidence level is less than 90%, it indicates that the difference between Campus Average and National Average is not significant and that both the scores are equivalent.

## I. Inferences

### 1. English Comprehension

Communication is the key to building relationships and trust that leads to success in business. English is a corporate language and hence, the ability to read and comprehend this language effectively is essential to qualify for all types of job profiles, whether it is technical or non-technical. It is seen that, on an average, the scores of your students is **equivalent to the National Average** in English module. However, matching National Average is not an ambitious aim. Your students should aspire to score higher. With regular practice and proper guidance from the faculty, students can boost their scores. Conducting regular tests will not only give them confidence but will also result in better understanding of concepts.

### 2. Quantitative Ability

Quantitative Ability measures a person's ability to deal with numbers and real-world problems quantitatively and mathematically. It is the ability to convert a real world problem into equations which can then be solved to find the result. This module is designed to measure a candidate's basic maths and algebraic skills, his/her understanding of basic quantitative concepts and his/her ability to reason quantitatively, solve quantitative problems and interpret graphical data. In Quantitative Ability module, your campus has **not performed well and on an average, their scores are much lower than the National Average**. Your students should work on the understanding of basic concepts in this module. They should practice a variety of questions from all the areas of this module, gradually moving to higher difficulty levels.

### 3. Logical Ability

The purpose of Logical Ability module is to test students' logical reasoning skills and to check their intuitive ability, decision making capability, problem solving approach and other areas which are important from a company's perspective. People with strong Logical Reasoning are quicker to perceive and interpret things objectively. Therefore, proficiency in this module is desired for all job profiles. The performance of your students in **Logical Ability section is not up to the mark. On an average, the scores are way below the National Average.** Your institute has to take firm steps to ensure that the students perform well in this section. Students should practice logical puzzles and games of various kinds to improve their logical reasoning skills. The faculty should take sincere efforts to effectively build a strong foundation of logical reasoning in students.

## II. Performance Summary

From the above analysis, it is clearly visible that the **performance of the students at your campus is satisfactory in English Comprehension**, whereas extra efforts can make a tremendous difference in performance. However, the students' performance is **not satisfactory in Quantitative Ability and Logical Ability**, therefore additional training sessions and corrective measures are required by the campus authorities. Methodologies such as mock tests, assignments and extra classes can become a valuable strategy for the benefit of students. The campus can also include proactive mentoring sessions for weak students and review their skills in the given area(s). Another approach can be to hold training sessions focusing on comprehensive guidance for the students to excel in their weak areas. The gain resulting from these training sessions and your continuous support will allow overall development of the student and further enhancement in their abilities.

### III. Training Suggestions

This section lists areas where your students need to improve on the basis of their performance in the AMCAT. For each module, according to the degree of improvement needed, appropriate suggestions have been provided.

**Campus Training Requirement Table**

<b>Area to Improve Upon</b>	<b>Degree of Improvement</b>	<b>Suggestion</b>
English Comprehension	Moderate	Conduct a number of mock tests and ensure that the students appear in each of these tests. This will help them to know where they actually stand. Guide the students to scribble key points while reading any passage/paragraph. This will help them understand the essence of the text and find answers to passage-based questions easily.
Quantitative Ability	Very Strong	Real time problems on different topics should be extensively discussed to equip the students with different concepts. Train the students to follow the clues and directions given in the questions well. Once the question is understood in a clear manner, half the job is done. Encourage pupils not to read mathematics, but to write and practice. That is the only way to learn mathematics.
Logical Ability	Very Strong	Advise students to develop their own notations so that they can represent the problem using proper symbols, diagrams etc. Encourage students to solve different types of puzzles and questions which need logical thinking. Help them understand the problem clearly in their minds before they start solving it. Include explicit training for reasoning skills to make the students practice different types of questions such as syllogism, blood relations, direction sense, pattern recognition, etc.

## Section 2 - Students' Employability

---

This section gives you an approximate idea about the kind of companies your students are competent for. This section also provides an insight into the criteria used by different companies for their hiring process. Additionally, an estimate of the employability of your campus students in different sectors is mentioned. In order to improve employability prospects, domains in which your students need to focus their efforts are also listed.

### I. Perspective on Corporate Shortlisting Criteria

In this section, we discuss the different kind of job profiles available for fresh graduates. For each domain, we discuss the nature of the job and the kinds of skills required to succeed in the particular job profile.

- **IT Services**

These types of service companies have large training setups of their own. They provide system integration solutions, software application development, testing solutions and many other services. For large services companies, Computer Programming score is not an important criterion. They look for candidates with acceptable English and Logical Reasoning along with strong Quantitative Ability skills. A good score in computer programming module is an advantage. HCL, TCS, Wipro, Satyam, Polaris etc are some of the major large scale service based companies.

- **ITeS and BPO**

Business process outsourcing companies can be aptly defined as those that act to utilize the services of a third party in order to perform its back office operations. The BPO market is forecast to hit \$450 billion by 2012. These companies look at moderate to outstanding/exceptionally good English, depending on whether they have national or international clients. The other parameters they use for short listing are acceptable Logical Reasoning and Computer skills. GE Capital, Convergys, Wipro Spectramind and Dell are some of the prominent BPO entities.

- **Hardware and Networking**

These companies specialize in Hardware and Network Support and basically provide integrated solutions for business enterprise applications, networking equipment and network management. That is they help manage organization's computing resources up and running. These companies primarily look for average quantitative and logical ability. Since the job does not include a lot of interaction with clients, they do not necessarily require good scores in English Comprehension. Cisco, Hewlett Packard, Nortel, NEC, Citrix and Netgear are some of the Hardware/Networking companies.

- **KPO/Analyst**

Knowledge Processing Outsourcing (popularly known as KPO) calls for the application of specialized domain pertinent knowledge. KPO business entities provide typical domain-based processes, advanced analytical skills and business expertise, rather than just process expertise. These companies look for an impressive command in English and sound knowledge in both Quantitative and Logical Reasoning. Evalueserve, Ugam Solutions, 24/7 Customer, ICICI OneSource, etc. are some of the leading KPOs in India.

## II. Employability Prospects

The following table suggests the methods to be implemented in order to improve employability of your students with reference to particular job profiles. We have investigated what precise skills are deficient in students which make them unemployable. These skills need to be improved through efforts of the student and campus. Campus administration is requested to go through these suggestions and implement them to make students more employable.

**Campus Job Match Table**

<b>Type of Company</b>	<b>Percentage of Students Eligible</b>	<b>Percentage of Students Need some training</b>	<b>Percentage of Students Need lot of training</b>
IT Services	10.1%	7.9%	82%
ITeS and BPO	49.1%	5.8%	45.1%
Hardware and Networking	39.6%	12.5%	47.9%
KPO/Analyst	5.8%	25.5%	68.7%

### III. Bird's-eye-view of Employability

The following table suggests the methods to be implemented in order to improve employability of your students for each type of company. These recommendations are provided on the basis of weak modules for each company, which the faculty should work on to help their students. Campus is requested to go through these suggestions and implement them to elevate the chances of getting placed in that particular company.

**Campus Employability Enhancement Table**

Type of Company	Campus Employability Prospect	Areas in Need of Training for Improving Employability Chances
IT Services	Low	These companies are basically looking for good English and Logical skills with average Quantitative ability. If employability prospects is to be increased for this industry, campus faculty will need to focus on Quantitative Ability, Logical Ability and English Comprehension.
ITeS and BPO	Medium	These companies look for candidates proficient in English with average Logical and Quantitative abilities. If employability prospects is to be increased for this industry, campus faculty will need to focus on English Comprehension, Quantitative Ability and Logical Ability.
Hardware and Networking	Medium	These companies are basically looking for candidates with good English and average Logical abilities. If employability prospects is to be increased for this industry, campus faculty will need to focus on Logical Ability, English Comprehension and Quantitative Ability.
KPO/Analyst	Low	These companies look for candidates having proficiency in English with good Quantitative and Reasoning abilities. For better employability prospects in this industry, your students need to focus on English Comprehension, Quantitative Ability and Logical Ability.

## Section 3 - Intra Campus Comparison

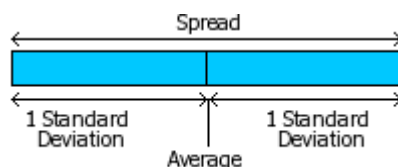
---

In this section, we will compare assessment scores to create a comprehensive comparative analysis between different branches of a degree of your college. This section shall explain the competitiveness of students of each degree, branch and batch with others in the respective group.

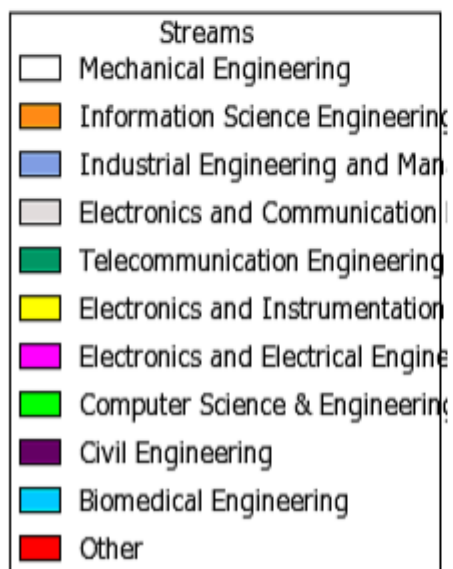
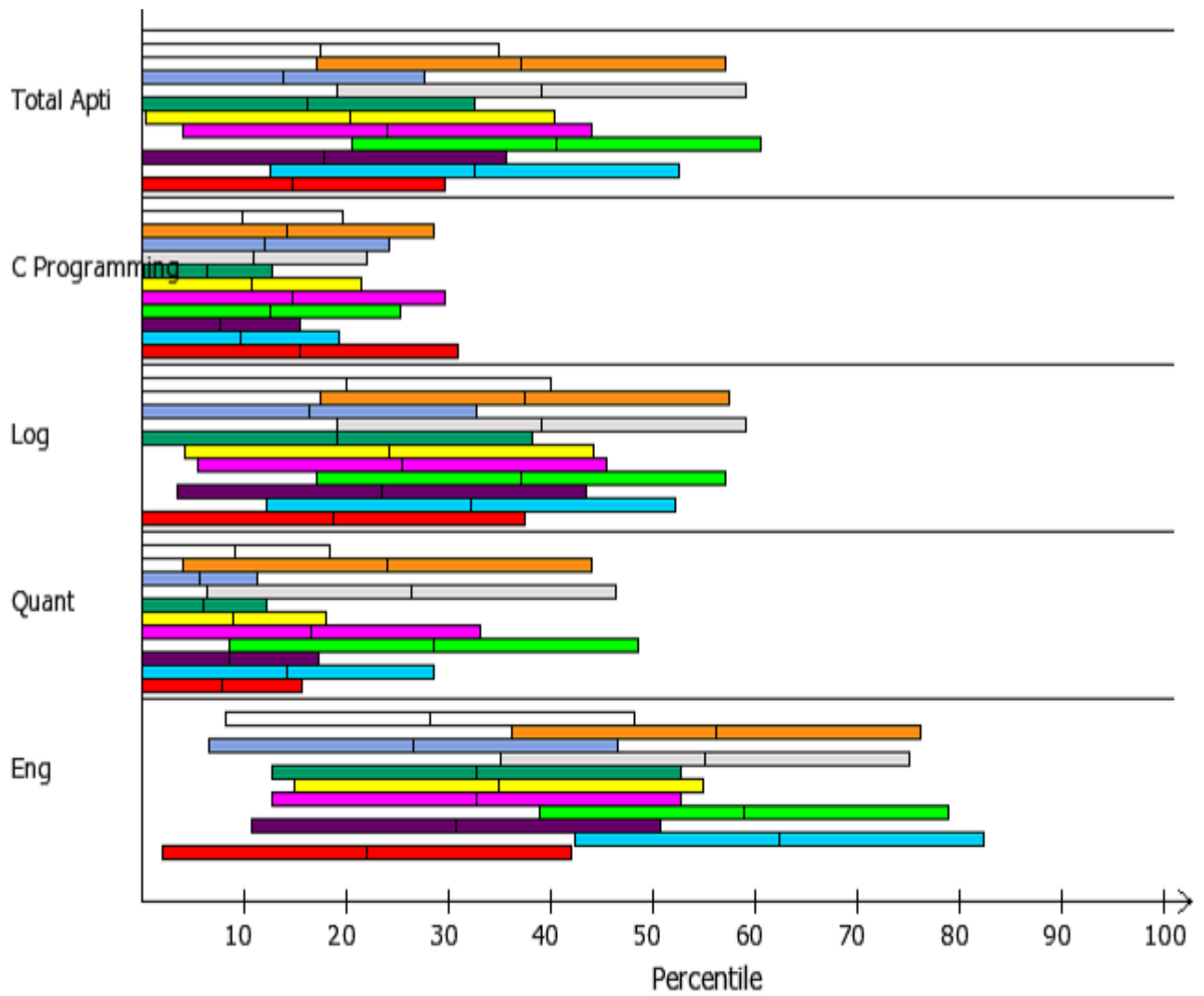
### I. Stream Comparison

In this section, we compare the AMCAT scores of students categorized by their branch of study. Students from the following branches participated in AMCAT at your college.

1. Computer Science & Engineering
2. Information Science Engineering
3. Electronics and Communication Engineering
4. Electronics and Instrumentation Engineering
5. Telecommunication Engineering
6. Electronics and Electrical Engineering
7. Mechanical Engineering
8. Civil Engineering
9. Biomedical Engineering
10. Industrial Engineering and Management
11. Other



The chart below shows the comparison of module-wise average scores for each stream. To interpret the chart, refer to the above illustration. Each horizontal bar represents the average score along with the standard deviation of a particular branch in that module. The vertical line at the center of each bar represents the average score. The length of bar represents the range of scores obtained by students of that stream.



Note: color bands are in order.



For each module, the following table lists the top scoring streams. Only the modules which are common for all the streams have been considered in the table.

### Top Scoring Streams For Each Module

Rank	English Comprehension	Quantitative Ability	Logical Ability	C Programming
1	Biomedical Engineering	Computer Science & Engineering	Electronics and Communication Engineering	Other
2	Computer Science & Engineering	Electronics and Communication Engineering	Information Science Engineering	Electronics and Electrical Engineering

*Note: streams with less than 5 students have not been considered for the analysis.*

On the basis of AMCAT scores obtained by different streams in your campus, we make following inferences -

1. English Comprehension

Candidates having **Biomedical Engineering as specialization have scored highest** in English Comprehension. **Computer Science & Engineering students scored slightly lower than Biomedical Engineering students** with a difference of 3.52 percentile points whereas Other students have scored significantly lower than Biomedical Engineering with a difference of 40.35 percentile points. Also, note that Other, Civil Engineering, Electronics and Electrical Engineering, Electronics and Instrumentation Engineering, Telecommunication Engineering, Industrial Engineering and Management and Mechanical Engineering students have scored poorly in comparison to the National Average whereas Biomedical Engineering, Computer Science & Engineering, Electronics and Communication Engineering and Information Science Engineering students have performed well with respect to the National Average.

2. Quantitative Ability

In Quantitative Ability **Computer Science & Engineering students are the top scorers, their average score exceeding that of Electronics and Communication Engineering** by 2.09 percentile points while **Industrial Engineering and Management students are the lowest scorers**. Also, consider that all the streams, on an average, have scored low in comparison to the National Average.

3. Logical Ability

Candidates having **Electronics and Communication Engineering as specialization have scored highest** in Logical Ability. **Information Science Engineering students scored slightly lower than Electronics and Communication Engineering students** with a difference of 1.67 percentile points whereas Industrial Engineering and Management students have scored significantly lower than Electronics and Communication Engineering with a difference of 22.82 percentile points. If nationwide comparison is made, then, on an average, all the

streams have performed worse than the National Average.

4. C Programming

**Other students have shown that they are the best** when it comes to C Programming. **Electronics and Electrical Engineering students follow them** with a difference of 0.62 percentile points while **Telecommunication Engineering students are the last in the order** with a difference of 9.09 percentile points. Also, consider that all the streams, on an average, have scored low in comparison to the National Average.

In your campus, **Biomedical Engineering, Computer Science & Engineering, Electronics and Communication Engineering and Other streams are top scorer in atleast one module.** Also, Industrial Engineering and Management stream performed poorly in maximum number of modules in comparison to other streams, and therefore need special attention.

## Aspiring Minds' Concluding Words

---

To summarize the overall analysis of your campus done by Aspiring Minds, key-points from all sections are highlighted below:

- The performance of the B.Tech/B.E students in your campus is **satisfactory in English Comprehension**, whereas extra efforts can make a tremendous difference in performance. However, the students' performance is **not satisfactory in Quantitative Ability and Logical Ability**, therefore additional training sessions and corrective measures are required by the campus authorities.
- It is clearly evident that **49.1% and 39.6%** of your students are eligible to work in **ITeS and BPO and Hardware and Networking** which is good, however **10.3% and 5.8%** of your students are eligible to work in **IT Services and KPO/Analyst** respectively which is an area of concern.
- In your campus, **Biomedical Engineering, Computer Science & Engineering, Electronics and Communication Engineering and Other streams are top scorer in atleast one module**. Also, Industrial Engineering and Management stream performed poorly in maximum number of modules in comparison to other streams, and therefore need special attention.

The strongest recommendation Aspiring Minds will like to give is initiation of classes to improve the weak areas of candidates. Apart from classes, regular quizzes and special training sessions should also be initiated, where students answer questions under time constraints. The classes should be student-friendly so that the students are open to questions and are free to ask their doubts. Peer teaching can be another way to increase the learning of students in the class

Along with increasing the employability of the institute, this will help your students compete with other candidates in a more effective and efficient way. With regard to areas where your students scored well, a sustained effort is needed. Regular assignments of problems should be given so that the students can accelerate their performance.

We strongly request the campus authorities to direct all students to follow the performance feedback given by Aspiring Minds based on their AMCAT scores. The campus authorities can go a long way in reminding students about their strengths and weaknesses, thus encouraging them to uphold their strengths and improve on their weaknesses. Consider special classes, better teaching processes and focused courses so that students get a good platform to improve and perform. We also strongly suggest conducting AMCAT again at campus after 4 months of dedicated hard work by students and campus authorities. This shall give students a benchmark to improve themselves, and help us understand if the initiated training program was useful. Of course, it would help students as well, with better scores leading to better job opportunities.

We thank Dr Ambedkar Institute of engineering for giving us an opportunity to conduct AMCAT in their campus. For any clarification or further analysis, we can be contacted at [campus@aspiringminds.in](mailto:campus@aspiringminds.in) (91) 124 4148777.

## Appendix

### I. Candidates Score Table

The Candidates score table below shows the scores and percentile of all the students of your campus tested on AMCAT. All scores lie between 100 and 900.

AMCAT ID	Name	AMCAT Score, Percentile							
		English Comprehension		Quantitative Ability		Logical Ability		C Programming	
158471018101238	A Reddy	490	57 %	340	16 %	395	24 %	313	13 %
158471018436558	Aarjeyan Shrestha	510	64 %	490	60 %	480	56 %	260	5 %
158471018474877	Abhi Metre	280	4 %	210	2 %	285	4 %	260	5 %
158471018470359	Abhilash K A	420	32 %	400	31 %	445	42 %	313	13 %
158471018171089	Abhiram Jadhav	430	36 %	340	16 %	445	42 %	313	13 %
158471018021837	Abhishek Kujur	510	64 %	385	26 %	460	48 %	313	13 %
158471018818704	Abhishek Sr	280	4 %	255	4 %	265	2 %	367	28 %
158471018768771	Abhishek L	440	39 %	325	13 %	460	48 %	260	5 %
158471018816001	Abhishek Tuppada	315	8 %	385	26 %	370	17 %	313	13 %
158471018770702	Abhishek Veeraghantimath	595	87 %	695	97 %	505	65 %	313	13 %
158471018617312	Abhishek H H	440	39 %	225	2 %	265	2 %	260	5 %
158471018512044	Abhishek M S M S	350	14 %	300	9 %	420	33 %	367	28 %
158471018192772	Adarsh Dubey	430	36 %	355	19 %	445	42 %	367	28 %
158471018956815	Adithya Lokanath	650	95 %	355	19 %	400	26 %	207	2 %
158471018071005	Adithya S	490	57 %	325	13 %	460	48 %	367	28 %
158471018171686	Aditya Dixit	615	91 %	225	2 %	410	29 %	313	13 %
158471018485187	Aditya Amrit	615	91 %	270	6 %	495	62 %	207	2 %
158471018468809	Aditya Chinkote	255	3 %	225	2 %	335	10 %	313	13 %
158471018069659	Advait Yeshodhar	755	100 %	445	45 %	505	65 %	153	0 %
158471018004133	Aishwarya D	535	72 %	400	31 %	545	79 %	367	28 %
158471018139485	Aishwarya Jambagi	560	79 %	-	-	410	29 %	153	0 %
158471018970123	Ajaykumar K H	490	57 %	560	80 %	460	48 %	473	68 %
158471018542065	Ajayshankar A	630	93 %	695	97 %	630	95 %	207	2 %
158471018425998	Ajith R	360	16 %	355	19 %	420	33 %	367	28 %
158471018348737	Akanksha T	395	25 %	225	2 %	255	2 %	313	13 %
158471018367879	Akash B	545	75 %	550	77 %	460	48 %	260	5 %
158471018728579	Akash R	405	28 %	400	31 %	410	29 %	367	28 %
158471018497816	Akash Akash	370	18 %	195	1 %	255	2 %	260	5 %
158471018812350	Akash.a Akash.a	395	25 %	240	3 %	340	11 %	260	5 %
158471018471441	Akasha K R	560	79 %	460	50 %	470	52 %	367	28 %
158471018164555	Akhil J	545	75 %	385	26 %	350	13 %	313	13 %
158471018548093	Akhil Dev B	500	61 %	560	80 %	375	19 %	367	28 %
158471018044300	Akhil Bhandari	465	48 %	-	-	455	46 %	313	13 %
158471018816046	Akhil Kumar Akhil	465	48 %	240	3 %	420	33 %	313	13 %

AMCAT ID	Name	AMCAT Score, Percentile							
		English Comprehension		Quantitative Ability		Logical Ability		C Programming	
158471018431685	Akhila M	430	36 %	370	22 %	425	35 %	207	2 %
158471018273193	Akhilesh Bagalkot	360	16 %	430	40 %	540	77 %	260	5 %
158471018116083	Akhilesh S	430	36 %	300	9 %	375	19 %	367	28 %
158471018477515	Akruthi C S	385	22 %	385	26 %	445	42 %	260	5 %
158471018001689	Akshay Mang	455	45 %	370	22 %	445	42 %	260	5 %
158471018592196	Akshay M	560	79 %	680	97 %	595	90 %	260	5 %
158471018150863	Akshay Naik	720	99 %	650	94 %	540	77 %	153	0 %
158471018458674	Akshay Hegde	630	93 %	210	2 %	455	46 %	420	48 %
158471018615797	Akshaya A	490	57 %	370	22 %	505	65 %	260	5 %
158471018403476	Akshayakumar Vaidya	650	95 %	355	19 %	495	62 %	313	13 %
158471018345474	Akshith K N	360	28 %	475	73 %	425	46 %	153	0 %
158471018601495	Akula Gokul	430	36 %	490	60 %	435	38 %	313	13 %
158471018163638	Aman Kumar	560	79 %	415	35 %	445	42 %	527	84 %
158471018553619	Amanpreet Singh Singh	535	72 %	325	13 %	460	48 %	473	68 %
158471018905645	Ambarish B	545	75 %	445	45 %	385	21 %	153	0 %
158471018293072	Ambika K	360	16 %	370	22 %	460	48 %	473	68 %
158471018961440	Ambika P Ambika P	265	3 %	240	3 %	205	1 %	100	0 %
158471018742698	Amith R S	580	84 %	300	9 %	340	11 %	260	5 %
158471018222899	Amodh Nadiger	430	36 %	430	40 %	420	33 %	207	2 %
158471018302696	Amogh D R	535	72 %	285	7 %	420	33 %	527	84 %
158471018558135	Amogha Varsha N	510	64 %	270	6 %	580	87 %	260	5 %
158471018980777	Amruth Pn	490	57 %	635	93 %	445	42 %	153	0 %
158471018284603	Amruth Nr	675	97 %	475	55 %	470	52 %	153	0 %
158471018996624	Amrutha T A	490	57 %	300	9 %	340	11 %	367	28 %
158471018712822	Amrutha Varshini Rg	535	72 %	310	10 %	460	48 %	153	0 %
158471018052321	Amulya Mb	500	61 %	430	40 %	435	38 %	367	28 %
158471018602921	Ananya R	405	28 %	165	1 %	300	5 %	420	48 %
158471018265192	Aneesha Islam	475	52 %	430	40 %	520	71 %	260	5 %
158471018436681	Anish N	455	45 %	385	26 %	325	8 %	153	0 %
158471018736934	Anish Venkatesha	630	93 %	590	86 %	470	52 %	473	68 %
158471018045397	Anish Kakathkar	605	89 %	400	31 %	445	42 %	367	28 %
158471018916429	Anitha G S	280	4 %	310	10 %	445	42 %	260	5 %
158471018350625	Anjum Zunaira	420	32 %	-	-	375	19 %	260	5 %
158471018057897	Ankitha Desai	685	97 %	430	40 %	360	15 %	313	13 %
158471018742770	Ankitha Ankitha	325	9 %	340	16 %	340	11 %	153	0 %
158471018985196	Ankitha K P	580	84 %	460	50 %	375	19 %	260	5 %
158471018938920	Ankur Singh Singh	325	9 %	325	13 %	310	6 %	473	68 %
158471018483906	Anmol V	405	28 %	355	19 %	445	42 %	260	5 %
158471018002581	Anmol N	510	64 %	210	2 %	350	13 %	367	28 %
158471018820702	Anshu Anshu	490	57 %	590	86 %	460	48 %	207	2 %
158471018357449	Anuj S M	710	99 %	-	-	580	87 %	313	13 %
158471018690056	Anupama A S	395	25 %	210	2 %	325	8 %	420	48 %
158471018397016	Anuraag Khare	720	99 %	490	60 %	505	65 %	313	13 %
158471018553623	Anurag Jha	595	87 %	505	64 %	420	33 %	313	13 %

AMCAT ID	Name	AMCAT Score, Percentile							
		English Comprehension		Quantitative Ability		Logical Ability		C Programming	
158471018919626	Anusha Lagidi	615	91 %	770	100 %	520	71 %	420	48 %
158471018881283	Anusha M	430	36 %	310	10 %	325	8 %	260	5 %
158471018285122	Anusha Bhuvana Hebbar	395	25 %	355	19 %	400	26 %	367	28 %
158471018348145	Anushree K	545	75 %	400	31 %	385	21 %	420	48 %
158471018267149	Apil Bist	595	87 %	415	35 %	445	42 %	367	28 %
158471018526988	Archana K P P	370	18 %	370	22 %	385	21 %	367	28 %
158471018296375	Arpita D.kuntoje	440	64 %	400	46 %	435	50 %	473	68 %
158471018351868	Arpitha N S	630	93 %	310	10 %	385	21 %	153	0 %
158471018536443	Arpitha S	405	28 %	550	77 %	420	33 %	207	2 %
158471018442332	Arpitha.g Guruprasad	605	89 %	400	31 %	425	35 %	260	5 %
158471018256360	Arvind Kumar	500	61 %	560	80 %	485	58 %	260	5 %
158471018614308	Ascharya Soni	475	52 %	695	97 %	555	81 %	420	48 %
158471018633590	Ashutosh Singh	685	97 %	-	-	545	79 %	367	28 %
158471018463304	Ashwini Kolli	405	28 %	415	35 %	300	5 %	260	5 %
158471018936313	Athmiya Shekhar	525	69 %	355	19 %	335	10 %	207	2 %
158471018879747	Atul Tripathi	545	75 %	385	26 %	520	71 %	367	28 %
158471018971043	Avnish Kumar	455	45 %	535	73 %	530	74 %	473	68 %
158471018933627	Ayush Srivastava	440	39 %	620	91 %	505	65 %	313	13 %
158471018218856	Ayushi Sinha	440	39 %	415	35 %	400	26 %	260	5 %
158471018191684	Azher S	535	72 %	430	40 %	480	56 %	367	28 %
158471018476047	B Kumar	325	9 %	270	6 %	335	10 %	207	2 %
158471018868981	B Zothanpuui	405	28 %	415	35 %	480	56 %	207	2 %
158471018938819	B E Raja Raja	300	6 %	255	4 %	335	10 %	100	0 %
158471018182493	Badri Narayan S	475	52 %	340	16 %	395	24 %	367	28 %
158471018513835	Balaji Hs	440	39 %	460	50 %	445	42 %	313	13 %
158471018022509	Bannappa Patrot	465	48 %	385	26 %	420	33 %	367	28 %
158471018086148	Barkath Khan Barkarth Khan	280	4 %	120	0 %	335	10 %	207	2 %
158471018223872	Basavaraj Kengunti	350	14 %	385	26 %	360	15 %	207	2 %
158471018074486	Bathala Viswanath	455	45 %	445	45 %	455	46 %	313	13 %
158471018065487	Bhagya Shri T	395	25 %	370	22 %	425	35 %	367	28 %
158471018928529	Bhagyashree Annarao	385	22 %	370	22 %	395	24 %	367	28 %
158471018253679	Bharath Hk	475	52 %	505	64 %	445	42 %	260	5 %
158471018414124	Bharath M.p	545	75 %	270	6 %	510	67 %	367	28 %
158471018314430	Bharath Gowda C	455	45 %	300	9 %	400	26 %	260	5 %
158471018056425	Bharath.g Bharath	350	14 %	210	2 %	385	21 %	367	28 %
158471018021220	Bhargav G K	580	84 %	430	40 %	510	67 %	313	13 %
158471018668080	Bhargav D R	650	95 %	460	50 %	555	81 %	207	2 %
158471018557888	Bhavana Manjunath	405	48 %	445	63 %	370	27 %	420	48 %
158471018560250	Bhavana J	475	52 %	400	31 %	335	10 %	313	13 %
158471018042048	Bhavya Srinivas	755	100 %	535	73 %	545	79 %	420	48 %
158471018058449	Bhavya Shree S Bhavya Shree S	405	28 %	225	2 %	350	13 %	367	28 %

AMCAT ID	Name	AMCAT Score, Percentile							
		English Comprehension		Quantitative Ability		Logical Ability		C Programming	
158471018072211	Bhavyashree Bhavyashree	370	18 %	355	19 %	370	17 %	100	0 %
158471018909296	Bheemaraya R	385	22 %	240	3 %	385	21 %	260	5 %
158471018826293	Bhoomika S	405	28 %	415	35 %	460	48 %	207	2 %
158471018136007	Bhuvan Prasad	570	82 %	285	7 %	395	24 %	313	13 %
158471018804970	Bhuvan R	350	14 %	120	0 %	265	2 %	207	2 %
158471018940728	Bhuvana S	385	22 %	550	77 %	400	26 %	313	13 %
158471018377081	Bindu V	510	64 %	475	55 %	460	48 %	367	28 %
158471018061680	Bindu.j J	395	25 %	475	55 %	340	11 %	367	28 %
158471018925321	Binit Shrestha	350	14 %	475	55 %	335	10 %	420	48 %
158471018157752	Biradar Bhagwatroa	325	9 %	340	16 %	310	6 %	207	2 %
158471018693920	Bishal Rauniyar	325	9 %	210	2 %	385	21 %	367	28 %
158471018666897	Brunda Maili	465	48 %	210	2 %	335	10 %	420	48 %
158471018634479	Brunda Rv	560	79 %	520	69 %	510	67 %	260	5 %
158471018053380	Brunda Kumar	455	45 %	240	3 %	315	7 %	367	28 %
158471018013643	Brunda B M	385	22 %	225	2 %	310	6 %	420	48 %
158471018019236	Brunda P Brunda P	500	61 %	590	86 %	510	67 %	207	2 %
158471018064754	C Kumar	350	14 %	415	35 %	435	38 %	153	0 %
158471018920586	C Prajnan	420	32 %	400	31 %	315	7 %	420	48 %
158471018811548	Chaithra H N	360	16 %	285	7 %	350	13 %	260	5 %
158471018189003	Chandan P	370	18 %	520	69 %	385	21 %	313	13 %
158471018014502	Chandan Singh	370	18 %	325	13 %	360	15 %	153	0 %
158471018441968	Chandan M S	385	22 %	385	26 %	425	35 %	260	5 %
158471018487299	Chandan. Kesthur.	300	6 %	285	7 %	385	21 %	207	2 %
158471018853498	Chandana R	490	57 %	340	16 %	335	10 %	313	13 %
158471018430095	Chandana M A	395	25 %	400	31 %	410	29 %	367	28 %
158471018736587	Chandana K P	455	45 %	-	-	-	-	313	13 %
158471018337026	Chandana N	350	14 %	355	19 %	350	13 %	207	2 %
158471018927879	Chandana Kc	465	48 %	400	31 %	410	29 %	153	0 %
158471018732005	Chandrahekar Molkeri	465	48 %	225	2 %	290	4 %	153	0 %
158471018573436	Chandrashekhar H D	280	4 %	355	19 %	495	62 %	260	5 %
158471018936706	Chaya Rawath	230	1 %	445	45 %	335	10 %	100	0 %
158471018125600	Chaya M	280	4 %	150	0 %	325	8 %	207	2 %
158471018942165	Chethan Mc	350	14 %	310	10 %	385	21 %	260	5 %
158471018289338	Chethan Shetty	545	75 %	355	19 %	375	19 %	207	2 %
158471018310924	Chethan Bashetty	335	11 %	195	1 %	335	10 %	260	5 %
158471018585414	Chethan K	265	3 %	240	3 %	170	0 %	313	13 %
158471018184520	Chethan G Chethan G	475	52 %	490	60 %	435	38 %	527	84 %
158471018958119	Chethan Kumar N R	350	14 %	105	0 %	375	19 %	313	13 %
158471018740255	Chinmay M	545	75 %	460	50 %	455	46 %	313	13 %
158471018377617	Chinmayeshree K B	545	75 %	340	16 %	300	5 %	367	28 %
158471018321523	Chirag Gs	615	91 %	520	69 %	485	58 %	313	13 %
158471018972146	Darshan S	290	5 %	385	26 %	540	77 %	207	2 %

AMCAT ID	Name	AMCAT Score, Percentile							
		English Comprehension		Quantitative Ability		Logical Ability		C Programming	
158471018703702	Darshan M S	500	61 %	535	73 %	385	21 %	207	2 %
158471018847423	Darshan Darshan	475	52 %	415	35 %	425	35 %	313	13 %
158471018208939	Darshan K	650	95 %	460	50 %	510	67 %	367	28 %
158471018396425	Darshan Balaji P S	335	11 %	535	73 %	420	33 %	153	0 %
158471018585280	Dawood Muzawar Muzawar	350	14 %	165	1 %	255	2 %	367	28 %
158471018789823	Deeksha N	465	48 %	505	64 %	470	52 %	367	28 %
158471018177663	Deeksha R Sapate	430	36 %	270	6 %	420	33 %	153	0 %
158471018288562	Deekshith A	510	64 %	475	55 %	530	74 %	473	68 %
158471018125521	Deekshith Poojary	370	18 %	325	13 %	340	11 %	313	13 %
158471018428921	Deekshith Nayak	405	28 %	240	3 %	250	2 %	367	28 %
158471018194820	Deekshith J N	335	11 %	195	1 %	310	6 %	313	13 %
158471018389266	Deena Dechamma K.j	405	28 %	255	4 %	445	42 %	313	13 %
158471018637803	Deepa V J	630	93 %	605	88 %	470	52 %	367	28 %
158471018054973	Deepak Singh	675	97 %	575	83 %	520	71 %	420	48 %
158471018690595	Deepak S R	560	79 %	535	73 %	480	56 %	260	5 %
158471018467187	Deepak N	395	25 %	505	64 %	340	11 %	367	28 %
158471018307291	Deepanshu Sharma	675	97 %	520	69 %	410	29 %	420	48 %
158471018739764	Deepka R Deeoika R	325	9 %	300	9 %	325	8 %	367	28 %
158471018995574	Deepthi D	455	45 %	255	4 %	285	4 %	153	0 %
158471018755186	Deepu Deepu	265	3 %	210	2 %	265	2 %	420	48 %
158471018619927	Devayya Hiremath	335	11 %	400	31 %	370	17 %	420	48 %
158471018659175	Devpriya Jaiswal	360	16 %	520	69 %	480	56 %	207	2 %
158471018920512	Dhanuja N	385	22 %	385	26 %	410	29 %	260	5 %
158471018443352	Dhanunjay J T	420	32 %	445	45 %	325	8 %	313	13 %
158471018851114	Dhanush S	500	61 %	505	64 %	400	26 %	527	84 %
158471018337848	Dhanush C P	475	52 %	520	69 %	505	65 %	367	28 %
158471018281473	Dharani.g Prasad	475	52 %	415	35 %	395	24 %	260	5 %
158471018631253	Dheeraj B N	420	32 %	460	50 %	510	67 %	580	94 %
158471018682857	Dhruva L	455	45 %	415	35 %	455	46 %	420	48 %
158471018764372	Digambar Dhanagar	440	39 %	300	9 %	370	17 %	367	28 %
158471018370001	Dikshith G	710	99 %	650	94 %	485	58 %	313	13 %
158471018850553	Dileep Hr	300	6 %	505	64 %	460	48 %	367	28 %
158471018100529	Dileep.m Dileep.m	440	39 %	385	26 %	315	7 %	260	5 %
158471018853236	Divakar D	335	11 %	340	16 %	250	2 %	367	28 %
158471018337830	Divya R	490	57 %	255	4 %	455	46 %	153	0 %
158471018135262	Divya N.e	335	11 %	475	55 %	410	29 %	527	84 %
158471018427588	Divyad Divyad	315	8 %	385	26 %	230	1 %	420	48 %
158471018956294	Drusti Dev	500	61 %	210	2 %	420	33 %	367	28 %
158471018334784	Durga Shree J Jayaseelan	385	22 %	300	9 %	375	19 %	207	2 %
158471018600766	Edwin R	325	9 %	520	69 %	435	38 %	367	28 %
158471018449868	Elvies Richard	420	32 %	225	2 %	370	17 %	367	28 %
158471018104293	G Suhas	640	94 %	605	88 %	555	81 %	100	0 %



AMCAT ID	Name	AMCAT Score, Percentile							
		English Comprehension		Quantitative Ability		Logical Ability		C Programming	
158471018732115	G D Kumar	465	48 %	400	31 %	395	24 %	207	2 %
158471018778166	Gadilingappa K K	395	25 %	300	9 %	360	15 %	367	28 %
158471018842237	Gagan R	420	32 %	340	16 %	240	1 %	153	0 %
158471018113190	Gagana R	280	4 %	385	26 %	350	13 %	153	0 %
158471018024490	Gagana Sindhu	720	99 %	430	40 %	530	74 %	207	2 %
158471018317323	Gagana R Gagana R	465	48 %	370	22 %	290	4 %	420	48 %
158471018113010	Ganesh Goudgave	440	39 %	310	10 %	395	24 %	367	28 %
158471018643743	Gangadhar M C	300	6 %	255	4 %	240	1 %	313	13 %
158471018508251	Gaurav Yadav	370	18 %	255	4 %	340	11 %	260	5 %
158471018576297	Geetha D C	430	36 %	325	13 %	470	52 %	153	0 %
158471018253120	Girish Kakkalameli	265	3 %	255	4 %	360	15 %	367	28 %
158471018050562	Gnanavi B S	385	22 %	340	16 %	315	7 %	207	2 %
158471018475728	Gnanesh K S Gnanesh K S	405	28 %	430	40 %	410	29 %	313	13 %
158471018480847	Gokul S	420	32 %	400	31 %	455	46 %	313	13 %
158471018514199	Gowtham M R	420	32 %	180	1 %	300	5 %	260	5 %
158471018360810	Grishma N	580	84 %	325	13 %	445	42 %	420	48 %
158471018665284	Gurukiran S N	280	4 %	285	7 %	255	2 %	313	13 %
158471018691869	Gurumurthy Hegde	420	32 %	355	19 %	420	33 %	260	5 %
158471018744749	Gurumurthy E T	440	39 %	400	31 %	335	10 %	260	5 %
158471018485445	Guruprasad K.s	370	18 %	370	22 %	480	56 %	367	28 %
158471018445463	Gururaj Dodamani	465	48 %	310	10 %	315	7 %	313	13 %
158471018756316	Gyneshwar Thiyagu	675	97 %	415	35 %	505	65 %	207	2 %
158471018025147	H Lallawmawma	420	32 %	400	31 %	425	35 %	260	5 %
158471018487558	H Kumar	335	11 %	210	2 %	325	8 %	260	5 %
158471018856612	H N Rohith	385	22 %	255	4 %	395	24 %	260	5 %
158471018779322	H R Kumar	420	32 %	490	60 %	435	38 %	473	68 %
158471018032297	Halima Makandar	455	45 %	300	9 %	385	21 %	313	13 %
158471018290041	Harani K R K R	370	18 %	165	1 %	340	11 %	260	5 %
158471018124064	Hariprasad Hariprasad	360	16 %	210	2 %	315	7 %	367	28 %
158471018324294	Haripriya Jorapur	710	99 %	-	-	460	48 %	313	13 %
158471018933818	Harish D	385	22 %	135	0 %	485	58 %	260	5 %
158471018112176	Harish T K	350	14 %	460	50 %	425	35 %	473	68 %
158471018137485	Harsha Mohan	545	75 %	355	19 %	400	26 %	420	48 %
158471018302627	Harsha K J	545	75 %	490	60 %	495	62 %	313	13 %
158471018099809	Harsha K G	455	45 %	550	77 %	385	21 %	153	0 %
158471018414363	Harshit Gupta	420	32 %	490	60 %	460	48 %	260	5 %
158471018805373	Harshitha R	580	84 %	475	55 %	360	15 %	527	84 %
158471018236634	Harshitha M D	510	64 %	270	6 %	470	52 %	473	68 %
158471018155777	Harshithkumar Kumar	350	14 %	300	9 %	325	8 %	153	0 %
158471018065635	Harshjeet Kumar	525	69 %	620	91 %	530	74 %	313	13 %
158471018880040	Harsitha J	395	25 %	400	31 %	350	13 %	207	2 %
158471018617383	Hemanth U	475	52 %	430	40 %	435	38 %	420	48 %
158471018689305	Hemanth M R	630	93 %	520	69 %	520	71 %	260	5 %
158471018420036	Hemanth H S	405	28 %	195	1 %	200	0 %	313	13 %

AMCAT ID	Name	AMCAT Score, Percentile							
		English Comprehension		Quantitative Ability		Logical Ability		C Programming	
158471018238610	Hemanth Kumar T N	360	16 %	430	40 %	425	35 %	260	5 %
158471018264155	Hemsuriya Manikandan	630	93 %	415	35 %	460	48 %	420	48 %
158471018017016	Himani Sahoo	490	57 %	560	80 %	540	77 %	207	2 %
158471018954720	Himanshu Gupta	300	6 %	430	40 %	425	35 %	527	84 %
158471018023774	Himanshu Sharma	560	79 %	520	69 %	530	74 %	313	13 %
158471018112887	Hithaishri D	405	28 %	325	13 %	460	48 %	153	0 %
158471018583102	Hruthvik L	440	39 %	560	80 %	595	90 %	313	13 %
158471018114862	Inchara Gowda	490	57 %	210	2 %	370	17 %	207	2 %
158471018178733	Indresh Katti	545	75 %	460	50 %	445	42 %	207	2 %
158471018431244	Isaac Lalremruata	405	28 %	535	73 %	470	52 %	313	13 %
158471018549038	Ishitha N	500	61 %	445	45 %	435	38 %	580	94 %
158471018356109	Jagan Sirdesai	335	11 %	240	3 %	370	17 %	367	28 %
158471018112436	Jagriti Priyadarshani	490	57 %	550	77 %	530	74 %	260	5 %
158471018038864	Jahnavi M S	265	3 %	340	16 %	180	0 %	367	28 %
158471018897623	Jamaluddin Ali	560	79 %	490	60 %	480	56 %	207	2 %
158471018444444	Jayanth D	430	36 %	325	13 %	435	38 %	260	5 %
158471018047120	Jayanth H K	475	52 %	340	16 %	300	5 %	260	5 %
158471018361653	Jayaprakash M	465	48 %	225	2 %	335	10 %	260	5 %
158471018404705	Jayashree G	360	16 %	445	45 %	420	33 %	260	5 %
158471018501135	Jayashree A.m A.m	490	57 %	430	40 %	460	48 %	367	28 %
158471018468214	Jeevitha K	490	57 %	340	16 %	420	33 %	420	48 %
158471018765961	Jeevitha O Salian	455	45 %	240	3 %	335	10 %	367	28 %
158471018829331	Jim Pereira	510	64 %	490	60 %	420	33 %	367	28 %
158471018416171	Kadappanavara Hanumantha	325	9 %	415	35 %	300	5 %	207	2 %
158471018331424	Karthik Suresh	500	61 %	575	83 %	445	42 %	207	2 %
158471018854947	Karthik Y	385	22 %	635	93 %	520	71 %	313	13 %
158471018083178	Karthik S	440	39 %	400	31 %	375	19 %	420	48 %
158471018390733	Karthik A Karthik	360	16 %	270	6 %	275	3 %	420	48 %
158471018264914	Karthik S N Karthik S N	325	9 %	415	35 %	340	11 %	313	13 %
158471018599568	Kartik Kore	500	61 %	475	55 %	485	58 %	420	48 %
158471018110604	Karuna Prasad S Prasad	570	82 %	505	64 %	400	26 %	153	0 %
158471018327266	Kasthuri B Kasthuri B	395	25 %	225	2 %	300	5 %	313	13 %
158471018283439	Kavana V	335	11 %	300	9 %	445	42 %	313	13 %
158471018369832	Kavita Kinagi	350	14 %	400	31 %	350	13 %	367	28 %
158471018872345	Kavitha G	395	43 %	385	41 %	340	19 %	153	0 %
158471018356964	Kavya N M Kavya N M	245	2 %	255	4 %	375	19 %	260	5 %
158471018095782	Kavya R R	325	9 %	225	2 %	370	17 %	313	13 %
158471018270686	Keerthana V	455	45 %	340	16 %	350	13 %	420	48 %
158471018396497	Keerthana.n Nanjundaswamy.n	560	79 %	355	19 %	425	35 %	153	0 %

AMCAT ID	Name	AMCAT Score, Percentile							
		English Comprehension		Quantitative Ability		Logical Ability		C Programming	
158471018962850	Keerthi K	405	28 %	-	-	370	17 %	153	0 %
158471018257230	Keerthi B	720	99 %	560	80 %	480	56 %	260	5 %
158471018958012	Keerthilatha.a Keerthilatha.a	440	39 %	385	26 %	315	7 %	260	5 %
158471018133182	Kiran Hegganadavara	420	32 %	560	80 %	510	67 %	260	5 %
158471018018789	Kiran B	315	8 %	300	9 %	385	21 %	313	13 %
158471018581672	Kishan Kandu	475	52 %	550	77 %	375	19 %	207	2 %
158471018982112	Kishor Kishor Ma	315	8 %	310	10 %	370	17 %	367	28 %
158471018839097	Kishore N	335	11 %	300	9 %	370	17 %	313	13 %
158471018528098	Koushal N R	350	14 %	445	45 %	360	15 %	207	2 %
158471018764725	Kowshik Gouda	490	57 %	180	1 %	315	7 %	420	48 %
158471018028191	Krishna Pol	440	39 %	415	35 %	375	19 %	207	2 %
158471018532610	Krushik K	475	52 %	-	-	485	58 %	420	48 %
158471018313336	Kruthika Mannur	490	57 %	520	69 %	360	15 %	207	2 %
158471018943200	Kruthika.s.gowda Kruthika	360	16 %	195	1 %	310	6 %	260	5 %
158471018971083	Kshithija S	630	93 %	575	83 %	495	62 %	260	5 %
158471018648186	Kumar R	420	32 %	400	31 %	395	24 %	367	28 %
158471018141887	Kuruba Abhishek	490	57 %	460	50 %	445	42 %	420	48 %
158471018400494	Kushal N N	315	8 %	150	0 %	290	4 %	260	5 %
158471018720730	Lakshmi K	595	87 %	650	94 %	420	33 %	473	68 %
158471018595621	Lakshmi T	430	36 %	460	50 %	360	15 %	260	5 %
158471018062316	Lalhmimg Mawia	630	93 %	340	16 %	350	13 %	420	48 %
158471018950876	Lalitha N A	465	48 %	490	60 %	435	38 %	260	5 %
158471018545475	Lalramkinlova Lalramkinlova	640	94 %	415	35 %	435	38 %	260	5 %
158471018905345	Leelavathi N.v	290	5 %	325	13 %	370	17 %	153	0 %
158471018280763	Leena Jain	490	57 %	415	35 %	350	13 %	153	0 %
158471018286440	Lekha V	440	39 %	385	26 %	395	24 %	313	13 %
158471018876036	Lekhan H C Hc	300	6 %	210	2 %	310	6 %	207	2 %
158471018042810	Likhith D	595	87 %	400	31 %	470	52 %	313	13 %
158471018883247	Likith R	525	69 %	340	16 %	420	33 %	367	28 %
158471018653131	Likith Gowda	465	48 %	430	40 %	445	42 %	207	2 %
158471018750320	Lochan D	370	18 %	300	9 %	265	2 %	313	13 %
158471018155238	Lokanath D Divakar	385	22 %	490	60 %	385	21 %	367	28 %
158471018258628	Lolakshi S J Lolakshi S J	405	28 %	355	19 %	410	29 %	207	2 %
158471018760935	M L Vidhya M L Vidhya	405	28 %	445	45 %	435	38 %	367	28 %
158471018279188	M.s. Nithin	465	48 %	430	40 %	480	56 %	207	2 %
158471018292351	Madhu C	395	25 %	325	13 %	470	52 %	420	48 %
158471018976377	Madhura R	465	48 %	300	9 %	445	42 %	527	84 %
158471018232605	Madhushree Cu Madhu	525	69 %	385	26 %	385	21 %	313	13 %
158471018234067	Madhushree.s Madhushree.s	290	5 %	310	10 %	420	33 %	260	5 %
158471018579440	Mahadeesh M R	395	25 %	180	1 %	400	26 %	260	5 %

AMCAT ID	Name	AMCAT Score, Percentile							
		English Comprehension		Quantitative Ability		Logical Ability		C Programming	
158471018661067	Mahadev Reddy	315	8 %	180	1 %	310	6 %	260	5 %
158471018421938	Mahendra R	385	22 %	325	13 %	360	15 %	367	28 %
158471018936620	Maheshwari K	405	28 %	520	69 %	395	24 %	260	5 %
158471018660714	Mahipalreddy Mahipalreddy	245	2 %	300	9 %	310	6 %	420	48 %
158471018974362	Malagoud Patil	405	28 %	270	6 %	370	17 %	313	13 %
158471018277513	Mallikarjun B	405	28 %	240	3 %	340	11 %	367	28 %
158471018826480	Manasa V	455	45 %	370	22 %	425	35 %	313	13 %
158471018052560	Manasa R	535	72 %	355	19 %	445	42 %	527	84 %
158471018254732	Manavendra Nirgund	525	69 %	-	-	375	19 %	420	48 %
158471018252066	Manik Chavan	440	39 %	325	13 %	425	35 %	367	28 %
158471018585052	Manish Thapa	595	87 %	505	64 %	470	52 %	473	68 %
158471018740594	Manisha Dongre	300	6 %	550	77 %	570	85 %	313	13 %
158471018447763	Manjunath N	500	61 %	445	45 %	460	48 %	260	5 %
158471018583472	Manjunath K	440	39 %	445	45 %	435	38 %	367	28 %
158471018473839	Manjunath C	385	22 %	285	7 %	375	19 %	207	2 %
158471018914237	Manjunatha K N	430	36 %	-	-	520	71 %	207	2 %
158471018020420	Manjunatha N	535	72 %	385	26 %	325	8 %	260	5 %
158471018771706	Manohar V	490	57 %	285	7 %	510	67 %	313	13 %
158471018728223	Manoj M	475	52 %	400	31 %	460	48 %	207	2 %
158471018190486	Manoj Gowda	650	95 %	520	69 %	325	8 %	207	2 %
158471018616506	Manoj M	370	18 %	285	7 %	350	13 %	260	5 %
158471018136157	Manoj S	420	32 %	475	55 %	410	29 %	313	13 %
158471018304103	Manoj K	280	4 %	325	13 %	370	17 %	367	28 %
158471018362927	Manoj Kumar N	385	22 %	325	13 %	370	17 %	260	5 %
158471018687544	Mareppa Hmb	255	3 %	445	45 %	470	52 %	420	48 %
158471018493157	Md Arfeen	580	84 %	370	22 %	480	56 %	367	28 %
158471018029648	Md Rahil	430	36 %	560	80 %	445	42 %	420	48 %
158471018205355	Medhini Prabhakar	535	72 %	-	-	425	35 %	367	28 %
158471018471624	Meena Ela	500	61 %	325	13 %	395	24 %	260	5 %
158471018071015	Megha Bs	560	79 %	370	22 %	325	8 %	260	5 %
158471018904065	Meghana D H	405	28 %	370	22 %	410	29 %	260	5 %
158471018777617	Meghana B	430	36 %	285	7 %	300	5 %	420	48 %
158471018591549	Meghashree.n Meghashree.n	490	57 %	270	6 %	420	33 %	367	28 %
158471018410589	Mihir Kumar	405	28 %	635	93 %	410	29 %	207	2 %
158471018765031	Milindh Kashyap	500	61 %	430	40 %	445	42 %	367	28 %
158471018563484	Mitali Sharma	510	64 %	370	22 %	420	33 %	260	5 %
158471018948481	Mithun R	405	28 %	255	4 %	350	13 %	420	48 %
158471018364013	Mohammad .	430	36 %	445	45 %	420	33 %	260	5 %
158471018287758	Mohammed Ali	430	36 %	460	50 %	495	62 %	260	5 %
158471018532217	Mohammed Ahmed	395	25 %	520	69 %	505	65 %	367	28 %
158471018549443	Mohammed Sumair	370	18 %	325	13 %	315	7 %	260	5 %

AMCAT ID	Name	AMCAT Score, Percentile							
		English Comprehension		Quantitative Ability		Logical Ability		C Programming	
158471018755715	Mohammed Owais Gogi	405	28 %	430	40 %	370	17 %	207	2 %
158471018340198	Mohammed Saqlain Saqlain	300	6 %	340	16 %	445	42 %	207	2 %
158471018669658	Mohnish S	300	6 %	300	9 %	350	13 %	207	2 %
158471018666999	Monica G P	475	52 %	180	1 %	335	10 %	473	68 %
158471018923530	Monisha G	455	45 %	460	50 %	445	42 %	260	5 %
158471018969597	Mounesh Mali	350	14 %	195	1 %	265	2 %	260	5 %
158471018203431	Mrunal Singh	650	95 %	460	50 %	460	48 %	153	0 %
158471018698346	Mukundha U V	665	96 %	590	86 %	580	87 %	313	13 %
158471018775755	Munikrishna V	370	18 %	270	6 %	410	29 %	367	28 %
158471018903443	Murulidhar G	440	39 %	415	35 %	325	8 %	207	2 %
158471018203114	Muzafar Ahemed	360	16 %	270	6 %	370	17 %	313	13 %
158471018296098	Nagabhushan K M	475	52 %	370	22 %	435	38 %	260	5 %
158471018997043	Nagaraj Jawali	475	52 %	325	13 %	425	35 %	313	13 %
158471018240359	Nagaraj L	440	39 %	590	86 %	350	13 %	420	48 %
158471018088247	Nagarjun Bm	535	72 %	635	93 %	470	52 %	313	13 %
158471018155904	Nagesh Babanna	315	8 %	325	13 %	370	17 %	260	5 %
158471018850405	Nakesh Kumar Sunar	465	48 %	370	22 %	530	74 %	260	5 %
158471018313891	Nalini A R	440	39 %	-	-	485	58 %	420	48 %
158471018631026	Namrita Kour	560	79 %	535	73 %	520	71 %	367	28 %
158471018750393	Nandan T S	700	98 %	430	40 %	400	26 %	420	48 %
158471018778599	Nandan H J	545	75 %	195	1 %	230	1 %	260	5 %
158471018915788	Nandini Dey	720	99 %	385	26 %	470	52 %	313	13 %
158471018375739	Nanditha R Nanditha R	290	8 %	150	1 %	375	29 %	260	5 %
158471018178695	Narayan E D	465	48 %	300	9 %	555	81 %	420	48 %
158471018323653	Naveen Raj	475	52 %	430	40 %	375	19 %	260	5 %
158471018625256	Naveen S	510	64 %	620	91 %	410	29 %	367	28 %
158471018063267	Naveen Krishna	440	39 %	340	16 %	435	38 %	207	2 %
158471018168475	Nayana Kn	430	36 %	370	22 %	460	48 %	207	2 %
158471018882322	Nayana M M	370	18 %	225	2 %	265	2 %	153	0 %
158471018712357	Neelamika Sharanappa	475	52 %	400	31 %	455	46 %	313	13 %
158471018265263	Nethravathi B S	405	28 %	340	16 %	375	19 %	260	5 %
158471018716782	Nida Fathima	570	82 %	385	26 %	590	89 %	473	68 %
158471018030092	Nida R Khan Khan	335	11 %	300	9 %	350	13 %	100	0 %
158471018072538	Nidhi R	535	72 %	355	19 %	455	46 %	100	0 %
158471018728785	Niharika Harish Harish	405	28 %	520	69 %	400	26 %	313	13 %
158471018023441	Nihkil Raj Agr R	475	52 %	285	7 %	265	2 %	367	28 %
158471018686658	Nikhil Mehra	510	64 %	445	45 %	445	42 %	367	28 %
158471018400482	Nikhil V K	335	11 %	430	40 %	400	26 %	207	2 %
158471018471199	Nikhil Suryan	455	45 %	340	16 %	370	17 %	207	2 %
158471018288806	Nikhileshwari K	405	28 %	445	45 %	340	11 %	420	48 %
158471018056045	Nikhitha M	385	22 %	270	6 %	385	21 %	473	68 %

AMCAT ID	Name	AMCAT Score, Percentile							
		English Comprehension		Quantitative Ability		Logical Ability		C Programming	
158471018653406	Nikhitha Ck Nikhitha	455	45 %	210	2 %	360	15 %	367	28 %
158471018106272	Nikit Periwal	720	99 %	725	99 %	545	79 %	313	13 %
158471018075063	Niranjn R	360	16 %	385	26 %	425	35 %	207	2 %
158471018929330	Niranjn Yp	385	22 %	490	60 %	325	8 %	313	13 %
158471018949820	Nisha Shah	360	16 %	325	13 %	300	5 %	367	28 %
158471018492908	Nishanth Adithyan	535	72 %	430	40 %	410	29 %	260	5 %
158471018398394	Nishanth Mitra	420	32 %	490	60 %	425	35 %	313	13 %
158471018020871	Niteeshmurthy Bhat	500	61 %	475	55 %	385	21 %	313	13 %
158471018067796	Nithesh Niti	350	14 %	180	1 %	455	46 %	527	84 %
158471018107951	Nithin N	525	69 %	505	64 %	420	33 %	260	5 %
158471018941717	Nithin Bs	335	11 %	300	9 %	395	24 %	367	28 %
158471018676872	Nitish Chaudhary	360	16 %	225	2 %	240	1 %	153	0 %
158471018607230	Nuthan B M	430	36 %	370	22 %	420	33 %	313	13 %
158471018093112	P Sanchita	430	36 %	415	35 %	395	24 %	207	2 %
158471018826374	Padma R	290	5 %	300	9 %	385	21 %	153	0 %
158471018616658	Pallavi R	440	39 %	270	6 %	340	11 %	260	5 %
158471018618773	Pallavi K M	430	36 %	535	73 %	360	15 %	207	2 %
158471018300162	Pallavi Ba	405	28 %	325	13 %	505	65 %	367	28 %
158471018445723	Parinitha Gowda	640	94 %	650	94 %	470	52 %	367	28 %
158471018094273	Pavan M	580	84 %	460	50 %	455	46 %	313	13 %
158471018237786	Pavan S	535	72 %	415	35 %	290	4 %	100	0 %
158471018066397	Pavan R	370	18 %	490	60 %	435	38 %	260	5 %
158471018250751	Pavan Raj K	560	79 %	-	-	420	33 %	313	13 %
158471018953004	Pavan Kulkarni	385	22 %	520	69 %	445	42 %	527	84 %
158471018485434	Pavan Sd	405	28 %	385	26 %	375	19 %	313	13 %
158471018670534	Pavan R	405	28 %	300	9 %	290	4 %	313	13 %
158471018619659	Pavan J	475	52 %	415	35 %	290	4 %	313	13 %
158471018270617	Peram Reddy	335	11 %	535	73 %	520	71 %	367	28 %
158471018561280	Poo M	420	32 %	225	2 %	275	3 %	313	13 %
158471018096183	Pooja G	420	32 %	180	1 %	385	21 %	260	5 %
158471018819415	Pooja C C	500	61 %	445	45 %	485	58 %	260	5 %
158471018751735	Prabhu A M	490	57 %	325	13 %	275	3 %	313	13 %
158471018156891	Pradyumna Kp	545	75 %	325	13 %	410	29 %	313	13 %
158471018121521	Prajwal Bandi	385	22 %	325	13 %	395	24 %	313	13 %
158471018306412	Prajwal K	665	96 %	370	22 %	375	19 %	420	48 %
158471018843529	Prajwal Sr	420	32 %	340	16 %	540	77 %	313	13 %
158471018865388	Prajwal Yalameli	535	72 %	400	31 %	425	35 %	207	2 %
158471018249087	Prajwal P	280	4 %	285	7 %	460	48 %	100	0 %
158471018794576	Prajwal R	405	28 %	225	2 %	300	5 %	420	48 %
158471018738597	Prajwal B M B M	315	8 %	445	45 %	340	11 %	420	48 %
158471018333587	Prakhar Kumar	685	97 %	710	98 %	540	77 %	313	13 %
158471018501168	Prakruthi R A .	595	87 %	620	91 %	470	52 %	207	2 %
158471018292641	Pranathi P	395	25 %	310	10 %	395	24 %	260	5 %
158471018151815	Pranjn Kulshrestha	430	36 %	635	93 %	565	84 %	367	28 %

AMCAT ID	Name	AMCAT Score, Percentile							
		English Comprehension		Quantitative Ability		Logical Ability		C Programming	
158471018162014	Prasad Hundekar	490	57 %	550	77 %	385	21 %	260	5 %
158471018764617	Prasad Goled	385	22 %	505	64 %	540	77 %	207	2 %
158471018413394	Prashanth H.e	560	79 %	475	55 %	410	29 %	367	28 %
158471018115906	Prateek Deshpande	535	72 %	-	-	420	33 %	260	5 %
158471018824735	Prateek Deshmukh	420	32 %	430	40 %	455	46 %	367	28 %
158471018459967	Prateeksha Kumtakar	490	57 %	355	19 %	445	42 %	260	5 %
158471018423662	Prathiksha Shet	420	32 %	340	16 %	385	21 %	313	13 %
158471018849015	Praveen G	395	25 %	340	16 %	400	26 %	260	5 %
158471018024917	Praveen R	300	6 %	300	9 %	310	6 %	313	13 %
158471018350023	Praveen Kumar K L Kumar	350	14 %	300	9 %	360	15 %	260	5 %
158471018872225	Praveenkumar R	335	11 %	445	45 %	460	48 %	260	5 %
158471018839971	Preetham D P	420	32 %	535	73 %	425	35 %	260	5 %
158471018299432	Preethi Shekhar	465	48 %	240	3 %	395	24 %	313	13 %
158471018716736	Prem Chulaki	650	95 %	370	22 %	540	77 %	473	68 %
158471018671229	Pritam Sarkar	525	69 %	665	96 %	545	79 %	260	5 %
158471018184826	Prithvi S	430	36 %	505	64 %	395	24 %	207	2 %
158471018256507	Priya Naik	475	52 %	-	-	425	35 %	260	5 %
158471018366860	Priyadarshini.m Darshini	405	28 %	325	13 %	325	8 %	207	2 %
158471018576617	Priyanka H	500	61 %	490	60 %	425	35 %	153	0 %
158471018863683	Priyanka Nagaral	405	28 %	560	80 %	495	62 %	260	5 %
158471018508261	Priyanka Hosmani	370	18 %	300	9 %	340	11 %	313	13 %
158471018912996	Priyanka Patil	440	39 %	340	16 %	470	52 %	260	5 %
158471018960640	Priyanka.v Priyanka	245	2 %	150	0 %	265	2 %	260	5 %
158471018846973	Priyanshu Kumar	315	8 %	355	19 %	350	13 %	313	13 %
158471018436441	Pruthvi R	535	72 %	385	26 %	325	8 %	153	0 %
158471018685453	Puneeth S V	510	64 %	240	3 %	400	26 %	313	13 %
158471018709067	Punith N	510	64 %	575	83 %	480	56 %	100	0 %
158471018368252	Purushotham Np	315	8 %	165	1 %	370	17 %	313	13 %
158471018453765	Pushpa P P	350	14 %	385	26 %	285	4 %	367	28 %
158471018119610	R Malsawmdangzeli	685	97 %	415	35 %	-	-	260	5 %
158471018554134	R.m. Manohar	490	57 %	180	1 %	310	6 %	313	13 %
158471018799834	Rachana N	455	45 %	240	3 %	425	35 %	207	2 %
158471018553556	Rachana Dakshin	605	89 %	490	60 %	485	58 %	527	84 %
158471018707176	Rachappa Rachappa	230	1 %	255	4 %	340	11 %	420	48 %
158471018704004	Rachna S	630	93 %	355	19 %	530	74 %	367	28 %
158471018943571	Radhika K R	570	82 %	285	7 %	360	15 %	207	2 %
158471018121788	Raghu S	385	22 %	240	3 %	350	13 %	260	5 %
158471018691629	Raghu D	335	11 %	460	50 %	410	29 %	207	2 %
158471018234799	Raghu G	490	57 %	150	0 %	455	46 %	153	0 %
158471018947412	Rahul Naragund	570	82 %	340	16 %	505	65 %	313	13 %
158471018827313	Rahul Murthy	490	57 %	-	-	360	15 %	260	5 %
158471018366201	Rahul Mandal	360	16 %	300	9 %	400	26 %	153	0 %

AMCAT ID	Name	AMCAT Score, Percentile							
		English Comprehension		Quantitative Ability		Logical Ability		C Programming	
158471018450727	Rahul Rajan	325	9 %	605	88 %	445	42 %	260	5 %
158471018020200	Rajakumar Kalashetti Kalashetti	360	16 %	445	45 %	375	19 %	367	28 %
158471018363419	Rajat Navarathna	455	45 %	460	50 %	410	29 %	207	2 %
158471018324166	Rajath S	545	75 %	490	60 %	370	17 %	153	0 %
158471018321027	Rajath J M	370	18 %	195	1 %	325	8 %	260	5 %
158471018546751	Rajdeep Bhagat	385	22 %	270	6 %	410	29 %	260	5 %
158471018502984	Rajesh B J	370	18 %	370	22 %	510	67 %	367	28 %
158471018053320	Rajesh K	300	6 %	445	45 %	375	19 %	313	13 %
158471018721571	Rajesh Hk Hk	420	32 %	285	7 %	215	1 %	153	0 %
158471018762180	Rajkumar S	315	8 %	180	1 %	265	2 %	313	13 %
158471018039290	Rakesh D	455	45 %	225	2 %	410	29 %	367	28 %
158471018026187	Rakesh R	350	14 %	-	-	335	10 %	313	13 %
158471018246304	Rakesh Goundi	395	25 %	225	2 %	400	26 %	153	0 %
158471018151817	Rakshith S	475	52 %	355	19 %	400	26 %	207	2 %
158471018302818	Rakshith N	560	79 %	605	88 %	350	13 %	313	13 %
158471018791201	Rakshith C M	440	39 %	270	6 %	455	46 %	313	13 %
158471018650924	Rakshith N	405	28 %	-	-	335	10 %	313	13 %
158471018485737	Rakshitha D	570	82 %	355	19 %	395	24 %	367	28 %
158471018930299	Rakshitha S	370	18 %	285	7 %	425	35 %	313	13 %
158471018560386	Rakshitha N	525	69 %	270	6 %	370	17 %	260	5 %
158471018278727	Rakshitha M	605	89 %	-	-	420	33 %	313	13 %
158471018141690	Rakshithgowda K M	465	48 %	400	31 %	455	46 %	367	28 %
158471018738021	Ramanjaneya G	525	69 %	415	35 %	505	65 %	367	28 %
158471018813245	Ramya B S B S	535	72 %	310	10 %	470	52 %	367	28 %
158471018214430	Ranganatha S	535	72 %	460	50 %	540	77 %	473	68 %
158471018504646	Ranjith V	420	32 %	505	64 %	310	6 %	367	28 %
158471018514528	Ranjitha S	510	64 %	370	22 %	395	24 %	260	5 %
158471018576560	Ranjitha H P	665	96 %	560	80 %	495	62 %	260	5 %
158471018235684	Ranjitha. S	350	14 %	490	60 %	370	17 %	260	5 %
158471018151580	Rashmi T S	420	32 %	430	40 %	425	35 %	260	5 %
158471018345070	Rathin K G	475	52 %	520	69 %	435	38 %	313	13 %
158471018374324	Ravi Kumar B Kumar	395	25 %	460	50 %	420	33 %	207	2 %
158471018310827	Ravikant Patil	325	9 %	430	40 %	385	21 %	207	2 %
158471018938526	Ravikumar Ravikumar	350	14 %	300	9 %	250	2 %	260	5 %
158471018888355	Reddy V	350	14 %	325	13 %	375	19 %	313	13 %
158471018683798	Reshma D	580	84 %	225	2 %	520	71 %	313	13 %
158471018101150	Reshma N	560	79 %	490	60 %	425	35 %	473	68 %
158471018230306	Riddhi Sharma	455	45 %	400	31 %	410	29 %	367	28 %
158471018897226	Rijuta D	510	64 %	270	6 %	340	11 %	313	13 %
158471018091996	Rishika. R	405	28 %	180	1 %	335	10 %	260	5 %
158471018555601	Riteesh Mandi	405	28 %	285	7 %	350	13 %	207	2 %
158471018459356	Rohan Mangsuli	560	79 %	285	7 %	410	29 %	313	13 %
158471018767613	Rohan Jeeral	525	69 %	385	26 %	375	19 %	313	13 %



AMCAT ID	Name	AMCAT Score, Percentile							
		English Comprehension		Quantitative Ability		Logical Ability		C Programming	
158471018729408	Rohini Maled	440	39 %	475	55 %	480	56 %	473	68 %
158471018399721	Rohit R	535	72 %	415	35 %	420	33 %	367	28 %
158471018513652	Roshal Martin	570	82 %	490	60 %	485	58 %	313	13 %
158471018026203	Ruchitha S	440	39 %	370	22 %	395	24 %	260	5 %
158471018983200	S Sagar	350	14 %	270	6 %	455	46 %	260	5 %
158471018430242	S G Anushka	640	94 %	310	10 %	460	48 %	153	0 %
158471018593828	S P Siri	440	39 %	355	19 %	410	29 %	367	28 %
158471018741847	S Vignesh Prabhu	465	48 %	310	10 %	485	58 %	313	13 %
158471018774864	S.manju Nath	430	36 %	180	1 %	325	8 %	260	5 %
158471018254699	Sachin Verma	630	93 %	590	86 %	545	79 %	367	28 %
158471018635933	Sachin Pawar	370	18 %	300	9 %	400	26 %	313	13 %
158471018071272	Sachin Dev	370	18 %	575	83 %	455	46 %	207	2 %
158471018963272	Sachin K	350	14 %	475	55 %	445	42 %	153	0 %
158471018764290	Sachin Talakeri	290	5 %	430	40 %	375	19 %	420	48 %
158471018729548	Sagar Pv	430	36 %	460	50 %	400	26 %	367	28 %
158471018689319	Sagar Rajanal	385	22 %	415	35 %	395	24 %	260	5 %
158471018943135	Sagave Abhinav Sudhakar	500	61 %	370	22 %	410	29 %	260	5 %
158471018438500	Sahana M	420	32 %	195	1 %	340	11 %	313	13 %
158471018350592	Sahana C	500	61 %	355	19 %	455	46 %	313	13 %
158471018784887	Sahana B	535	72 %	475	55 %	420	33 %	260	5 %
158471018939946	Sahana S	535	72 %	270	6 %	445	42 %	207	2 %
158471018422069	Sahana V	525	69 %	370	22 %	480	56 %	153	0 %
158471018394562	Sahana Patil	455	45 %	355	19 %	340	11 %	473	68 %
158471018063409	Sahana L Lokesh	385	22 %	310	10 %	315	7 %	313	13 %
158471018973515	Sahil Dar	710	99 %	325	13 %	505	65 %	260	5 %
158471018662567	Sai G B	490	57 %	310	10 %	410	29 %	420	48 %
158471018850942	Sai Deepthi B P	570	82 %	560	80 %	455	46 %	367	28 %
158471018374514	Sairaj Yv	595	87 %	415	35 %	385	21 %	367	28 %
158471018890559	Saiteja Alvala	640	94 %	710	98 %	530	74 %	367	28 %
158471018638229	Salil Deshpande	595	87 %	635	93 %	570	85 %	207	2 %
158471018755974	Sandeep Beergonda	420	32 %	240	3 %	400	26 %	207	2 %
158471018168562	Sandhya Gopinath	440	39 %	325	13 %	425	35 %	260	5 %
158471018011343	Sangeetha.r Raju	360	16 %	180	1 %	370	17 %	420	48 %
158471018655756	Sangmesh Bhootpur	315	8 %	325	13 %	420	33 %	260	5 %
158471018343912	Sanjana B A	630	93 %	430	40 %	520	71 %	260	5 %
158471018204114	Sanjay Revanna	535	72 %	475	55 %	400	26 %	367	28 %
158471018093183	Sanjay Dev	510	64 %	400	31 %	460	48 %	260	5 %
158471018621048	Sanjay Rajanna	755	100 %	430	40 %	510	67 %	207	2 %
158471018968458	Sanjay H P	465	48 %	370	22 %	485	58 %	367	28 %
158471018361151	Sanjay D C	395	25 %	400	31 %	445	42 %	313	13 %
158471018235567	Sanjith P.s.	455	45 %	300	9 %	455	46 %	420	48 %
158471018427355	Sanketh G Y	455	45 %	370	22 %	425	35 %	260	5 %
158471018871151	Sanskar Kumar	605	89 %	575	83 %	545	79 %	420	48 %
158471018368566	Santhosh K N	385	22 %	340	16 %	325	8 %	313	13 %

AMCAT ID	Name	AMCAT Score, Percentile							
		English Comprehension		Quantitative Ability		Logical Ability		C Programming	
158471018194016	Santhosh H M	465	48 %	605	88 %	455	46 %	260	5 %
158471018779275	Santhosh K S Ks	510	64 %	370	22 %	265	2 %	367	28 %
158471018097848	Santhosh Kumar Ms	335	11 %	225	2 %	370	17 %	367	28 %
158471018197537	Saritha G	560	79 %	310	10 %	420	33 %	207	2 %
158471018055277	Sathvik Patel	300	6 %	195	1 %	315	7 %	313	13 %
158471018522088	Satyanarayan Bhat	315	8 %	415	35 %	395	24 %	260	5 %
158471018108859	Saurav M	535	72 %	415	35 %	485	58 %	367	28 %
158471018687371	Shahid Shafi	545	75 %	400	31 %	375	19 %	207	2 %
158471018123634	Shaikh Hossain	560	79 %	650	94 %	435	38 %	313	13 %
158471018601673	Shailaja H C H C	405	28 %	325	13 %	385	21 %	260	5 %
158471018304269	Shalini M Swaroop	710	99 %	535	73 %	505	65 %	260	5 %
158471018791335	Shama A	580	84 %	370	22 %	545	79 %	313	13 %
158471018517719	Shamanth S	560	79 %	370	22 %	240	1 %	367	28 %
158471018590251	Shamik Patil	510	64 %	400	31 %	470	52 %	207	2 %
158471018456134	Shanawaz Hyder	510	64 %	-	-	400	26 %	260	5 %
158471018265697	Sharan C R	465	48 %	355	19 %	325	8 %	367	28 %
158471018997767	Sharat Kuchanur	475	52 %	370	22 %	445	42 %	153	0 %
158471018300947	Shashank Kadiwal	580	84 %	340	16 %	410	29 %	367	28 %
158471018080721	Shashank Purohit	535	72 %	550	77 %	595	90 %	367	28 %
158471018940880	Shashank S	615	91 %	490	60 %	455	46 %	473	68 %
158471018420259	Shashank J S	385	22 %	445	45 %	480	56 %	153	0 %
158471018142992	Shashank J	475	52 %	270	6 %	420	33 %	367	28 %
158471018438201	Shashank Gowda P K Shashank Gowda P K	315	8 %	210	2 %	315	7 %	260	5 %
158471018155509	Shayana Acharya	420	32 %	370	22 %	350	13 %	207	2 %
158471018525875	Sheetal S	430	36 %	430	40 %	350	13 %	313	13 %
158471018166716	Shilpa Lingadal	420	32 %	430	40 %	395	24 %	313	13 %
158471018246212	Shitanshu Srivastava	475	52 %	505	64 %	340	11 %	313	13 %
158471018100229	Shiva L	455	45 %	340	16 %	495	62 %	527	84 %
158471018145071	Shivakumar P K	360	16 %	300	9 %	400	26 %	260	5 %
158471018108698	Shivam Tiwari	560	79 %	535	73 %	570	85 %	260	5 %
158471018159457	Shivam Tiwari	535	72 %	550	77 %	495	62 %	207	2 %
158471018938931	Shivanand Shivanand	420	32 %	210	2 %	310	6 %	207	2 %
158471018924035	Shobha K Shobha K	560	79 %	560	80 %	510	67 %	367	28 %
158471018223099	Shobhit Verma	595	87 %	490	60 %	480	56 %	313	13 %
158471018582197	Shobith Bharamshetty	370	18 %	370	22 %	470	52 %	313	13 %
158471018872878	Shreedhara G	405	28 %	285	7 %	410	29 %	420	48 %
158471018629754	Shreeshail Biradar	350	14 %	195	1 %	315	7 %	153	0 %
158471018708624	Shreya C N	595	87 %	575	83 %	485	58 %	260	5 %
158471018539480	Shreya D B	360	16 %	195	1 %	420	33 %	260	5 %
158471018957136	Shreyas Hc	475	52 %	550	77 %	285	4 %	313	13 %
158471018659913	Shreyas Kumar	500	61 %	605	88 %	420	33 %	153	0 %

AMCAT ID	Name	AMCAT Score, Percentile							
		English Comprehension		Quantitative Ability		Logical Ability		C Programming	
158471018399566	Shreyas R K	395	25 %	-	-	-	-	367	28 %
158471018388329	Shrimad Na	490	57 %	445	45 %	540	77 %	367	28 %
158471018523183	Shrivathsa N V	420	32 %	520	69 %	470	52 %	260	5 %
158471018497576	Shruthi D	525	69 %	400	31 %	335	10 %	207	2 %
158471018326207	Shruthi Shruthi	430	36 %	370	22 %	530	74 %	420	48 %
158471018422094	Shruthishree D K	265	3 %	340	16 %	435	38 %	420	48 %
158471018694605	Shub Ham	350	14 %	325	13 %	350	13 %	367	28 %
158471018607074	Shubham Saurav	420	32 %	590	86 %	225	1 %	313	13 %
158471018865250	Shwetha Shwetha	300	6 %	270	6 %	310	6 %	153	0 %
158471018989364	Shwetha S	430	36 %	340	16 %	470	52 %	313	13 %
158471018290913	Shwetha B	440	39 %	340	16 %	340	11 %	367	28 %
158471018422154	Shyamanth Upadhya	665	96 %	475	55 %	530	74 %	473	68 %
158471018098666	Siddarth Chandrappa	395	25 %	105	0 %	400	26 %	367	28 %
158471018642738	Sidramesha Guggari	605	89 %	605	88 %	485	58 %	367	28 %
158471018276798	Sinchana .mc	350	14 %	300	9 %	445	42 %	207	2 %
158471018630701	Sindhu N	595	87 %	460	50 %	480	56 %	367	28 %
158471018544963	Skanda M R	665	96 %	385	26 %	410	29 %	420	48 %
158471018009632	Skanda G	545	75 %	505	64 %	350	13 %	153	0 %
158471018673933	Sneha Spurthi	420	32 %	415	35 %	455	46 %	367	28 %
158471018803337	Sneha Rani	430	36 %	285	7 %	455	46 %	367	28 %
158471018980346	Snehananda H A	395	25 %	430	40 %	485	58 %	367	28 %
158471018949374	Snehashree S	420	32 %	475	55 %	480	56 %	260	5 %
158471018367590	Sonali S	465	48 %	460	50 %	375	19 %	153	0 %
158471018344848	Soumya Patil	500	61 %	400	31 %	410	29 %	153	0 %
158471018583641	Soundarya K	360	16 %	340	16 %	410	29 %	260	5 %
158471018181883	Soundarya. S	570	82 %	550	77 %	435	38 %	473	68 %
158471018548301	Sourabh S	500	61 %	475	55 %	540	77 %	260	5 %
158471018339799	Spandana Spandanak.r	360	16 %	270	6 %	300	5 %	260	5 %
158471018713558	Sparsha K	510	64 %	-	-	485	58 %	207	2 %
158471018354597	Spoorthy N V	490	57 %	400	31 %	285	4 %	260	5 %
158471018312056	Spurthi D H	595	87 %	460	50 %	495	62 %	473	68 %
158471018764660	Sree Harsha A.v.l	640	94 %	490	60 %	470	52 %	260	5 %
158471018592186	Sree Kiran B	465	48 %	340	16 %	395	24 %	313	13 %
158471018899066	Srikanth S	350	14 %	255	4 %	495	62 %	260	5 %
158471018579158	Srujana V	360	16 %	385	26 %	420	33 %	527	84 %
158471018664427	Stanzin Disket	420	32 %	300	9 %	385	21 %	260	5 %
158471018340663	Subhradeep Manna	420	32 %	400	31 %	435	38 %	313	13 %
158471018382499	Sudhanshu Govindaraju	560	79 %	430	40 %	360	15 %	367	28 %
158471018107106	Sudhanva K S	395	25 %	460	50 %	455	46 %	207	2 %
158471018336455	Sufiyan S	650	95 %	415	35 %	400	26 %	313	13 %
158471018279670	Suhaib Ahmed	405	28 %	355	19 %	410	29 %	420	48 %
158471018526454	Suhas M	490	57 %	505	64 %	435	38 %	207	2 %

AMCAT ID	Name	AMCAT Score, Percentile							
		English Comprehension		Quantitative Ability		Logical Ability		C Programming	
158471018880727	Suhas A	580	84 %	475	55 %	460	48 %	207	2 %
158471018810466	Sujay R	455	45 %	285	7 %	425	35 %	527	84 %
158471018521120	Sujith S	650	95 %	460	50 %	470	52 %	367	28 %
158471018169516	Sukesh M	535	72 %	605	88 %	435	38 %	313	13 %
158471018576099	Sukesh Rao	465	48 %	310	10 %	310	6 %	260	5 %
158471018224666	Suman S	510	64 %	255	4 %	375	19 %	260	5 %
158471018740559	Suman M	510	64 %	340	16 %	385	21 %	153	0 %
158471018540847	Sumanth K N	475	52 %	310	10 %	445	42 %	260	5 %
158471018169551	Sumanth .	535	72 %	385	26 %	460	48 %	367	28 %
158471018700595	Sumukh M	650	95 %	535	73 %	400	26 %	313	13 %
158471018943331	Sunil Kumar Bn Bn	370	18 %	285	7 %	395	24 %	313	13 %
158471018703935	Sunil N.s Sunil	255	3 %	255	4 %	310	6 %	367	28 %
158471018927985	Supreeth Ng	465	48 %	135	0 %	410	29 %	207	2 %
158471018021912	Supriya S	595	87 %	255	4 %	400	26 %	313	13 %
158471018246876	Supriya A M Gowda	535	72 %	415	35 %	400	26 %	473	68 %
158471018047713	Supriya. H H	420	32 %	210	2 %	410	29 %	367	28 %
158471018239062	Suraj P	630	93 %	560	80 %	580	87 %	260	5 %
158471018298864	Suresh Suri	465	48 %	300	9 %	230	1 %	260	5 %
158471018898339	Suresh Tr	465	48 %	310	10 %	520	71 %	207	2 %
158471018939307	Surya Mohan	500	61 %	210	2 %	285	4 %	260	5 %
158471018063744	Surya K	395	25 %	310	10 %	375	19 %	420	48 %
158471018263429	Sushant Tripathi	300	6 %	225	2 %	400	26 %	207	2 %
158471018636767	Sushma R V	370	18 %	385	26 %	410	29 %	260	5 %
158471018863217	Sushmitha K R K R	325	9 %	310	10 %	340	11 %	367	28 %
158471018781970	Swamy H	420	32 %	340	16 %	385	21 %	420	48 %
158471018215307	Swapnil Tiwari	570	82 %	535	73 %	580	87 %	420	48 %
158471018508792	Swastik L	570	82 %	325	13 %	395	24 %	313	13 %
158471018105922	Swetha B	315	8 %	300	9 %	375	19 %	260	5 %
158471018526871	Swikriti Gupta	570	82 %	355	19 %	410	29 %	260	5 %
158471018406863	Syed Ateeque Moinuddin Quadri Quadri	430	36 %	-	-	-	-	153	0 %
158471018921605	T.hari Prasath	290	5 %	370	22 %	335	10 %	367	28 %
158471018481949	Taniya P	685	97 %	475	55 %	385	21 %	207	2 %
158471018294278	Tanuja Kamatagi	300	10 %	105	0 %	350	22 %	207	2 %
158471018981330	Tejas T	500	61 %	255	4 %	410	29 %	313	13 %
158471018918059	Tejas B H	510	64 %	550	77 %	435	38 %	313	13 %
158471018479705	Thanmayi S	465	48 %	475	55 %	510	67 %	313	13 %
158471018090106	Thanuja T C Thanuja T C	265	3 %	415	35 %	395	24 %	207	2 %
158471018101053	Thanushree P Thanushree P	455	45 %	270	6 %	395	24 %	313	13 %
158471018756225	Tharun M T	325	9 %	195	1 %	340	11 %	313	13 %
158471018673633	Thayanna T	370	18 %	415	35 %	335	10 %	313	13 %
158471018592887	Thippeswamy E	255	3 %	285	7 %	310	6 %	420	48 %
158471018209479	Thulasi Ram T R .	335	11 %	310	10 %	375	19 %	367	28 %
158471018560269	Tushar Jaan	580	84 %	355	19 %	470	52 %	260	5 %

AMCAT ID	Name	AMCAT Score, Percentile							
		English Comprehension		Quantitative Ability		Logical Ability		C Programming	
158471018940983	Ujval D R	700	98 %	490	60 %	555	81 %	420	48 %
158471018709135	Ullas C	455	45 %	-	-	455	46 %	100	0 %
158471018558621	Ullas S	265	3 %	240	3 %	510	67 %	367	28 %
158471018778684	Uma Maheswari Palanisamy	535	72 %	475	55 %	530	74 %	367	28 %
158471018364560	Usha Rani R	440	39 %	400	31 %	455	46 %	313	13 %
158471018348204	Uttam Kulal	545	75 %	400	31 %	395	24 %	313	13 %
158471018115840	V Rahul	615	91 %	355	19 %	445	42 %	313	13 %
158471018679267	Vadiraj M	405	28 %	225	2 %	335	10 %	207	2 %
158471018918088	Vaibhav S	510	64 %	325	13 %	495	62 %	367	28 %
158471018328632	Vaishali B Vaishali B	440	39 %	-	-	350	13 %	207	2 %
158471018357216	Vaishnavi H A	475	52 %	430	40 %	460	48 %	207	2 %
158471018336896	Vaishnavi V	370	18 %	180	1 %	410	29 %	367	28 %
158471018155422	Vaishnavi B M	475	52 %	310	10 %	505	65 %	313	13 %
158471018597963	Vaishnavi Bhat	700	98 %	430	40 %	555	81 %	153	0 %
158471018203062	Vandana A.s	335	11 %	370	22 %	385	21 %	260	5 %
158471018568179	Vandana Vandana	545	75 %	415	35 %	460	48 %	367	28 %
158471018676640	Vanlal Dika	440	39 %	445	45 %	445	42 %	153	0 %
158471018338448	Vanlal Ruata	370	18 %	300	9 %	250	2 %	527	84 %
158471018067613	Vardhini Mohan	640	94 %	385	26 %	425	35 %	260	5 %
158471018780152	Varsha Shastri	580	84 %	325	13 %	360	15 %	473	68 %
158471018290717	Varshini S	475	52 %	325	13 %	495	62 %	260	5 %
158471018945175	Varshitha S	570	82 %	505	64 %	480	56 %	260	5 %
158471018811783	Varshitha Goshikar	605	89 %	370	22 %	540	77 %	207	2 %
158471018576612	Varshitha G A	535	72 %	210	2 %	400	26 %	420	48 %
158471018567896	Varshitha S	360	16 %	240	3 %	395	24 %	207	2 %
158471018859753	Varun Kumar	395	25 %	340	16 %	310	6 %	420	48 %
158471018628684	Veda Chavan	360	16 %	180	1 %	285	4 %	367	28 %
158471018121594	Vedala Dinesh	545	75 %	575	83 %	425	35 %	313	13 %
158471018560445	Veerabhadraswamy R	455	45 %	490	60 %	215	1 %	367	28 %
158471018300426	Veeresh Veeresh	350	14 %	385	26 %	520	71 %	420	48 %
158471018946986	Veeresh R	475	52 %	430	40 %	400	26 %	420	48 %
158471018859969	Venkatesh Hegde	405	28 %	475	55 %	455	46 %	207	2 %
158471018739531	Vicky Kumar	430	36 %	210	2 %	435	38 %	260	5 %
158471018171975	Vignesh G	490	57 %	-	-	410	29 %	420	48 %
158471018010983	Vignesh P	580	84 %	325	13 %	425	35 %	313	13 %
158471018135448	Vijayakumar Arahunasi	350	14 %	240	3 %	255	2 %	260	5 %
158471018673288	Vikas Kumar	405	28 %	650	94 %	470	52 %	367	28 %
158471018315379	Vikas T G	385	22 %	430	40 %	335	10 %	207	2 %
158471018935692	Vikas B S	560	79 %	550	77 %	455	46 %	313	13 %
158471018455263	Vinay S	500	61 %	285	7 %	385	21 %	207	2 %
158471018555067	Vinay K M	420	32 %	355	19 %	420	33 %	313	13 %
158471018282320	Vinay R	615	91 %	505	64 %	485	58 %	207	2 %
158471018959960	Vinay S	395	25 %	460	50 %	340	11 %	313	13 %
158471018376970	Vinay H.m	500	61 %	195	1 %	370	17 %	367	28 %

AMCAT ID	Name	AMCAT Score, Percentile							
		English Comprehension		Quantitative Ability		Logical Ability		C Programming	
158471018173332	Vinay Kumar G S	595	87 %	475	55 %	395	24 %	207	2 %
158471018180874	Vinayaka Shastri	525	69 %	195	1 %	385	21 %	527	84 %
158471018182271	Vinayaka Deshpande	385	22 %	165	1 %	335	10 %	367	28 %
158471018287114	Vindhya J	710	99 %	605	88 %	510	67 %	367	28 %
158471018451945	Vineeth M V Vineeth Mv	370	18 %	415	35 %	485	58 %	367	28 %
158471018068218	Vineetha V	560	79 %	445	45 %	480	56 %	207	2 %
158471018177061	Vinod Hugar	465	48 %	270	6 %	360	15 %	260	5 %
158471018078102	Vinodh P N	385	22 %	210	2 %	420	33 %	260	5 %
158471018235777	Vinutha Kv	350	14 %	225	2 %	290	4 %	420	48 %
158471018668095	Vishal M	440	39 %	385	26 %	385	21 %	313	13 %
158471018741290	Vishma Vijay	510	64 %	210	2 %	395	24 %	420	48 %
158471018054983	Vishwa Jyestha Mishra	545	75 %	460	50 %	375	19 %	313	13 %
158471018709169	Vishwanath M	675	97 %	520	69 %	445	42 %	260	5 %
158471018172563	Vishwanath Nagu G Nagu	385	22 %	355	19 %	290	4 %	207	2 %
158471018432927	Vishwas K S	465	48 %	340	16 %	470	52 %	260	5 %
158471018287421	Vivek G S	290	5 %	385	26 %	480	56 %	207	2 %
158471018262666	Wamiq Yousuf	395	25 %	-	-	335	10 %	207	2 %
158471018370710	Yankanna Yankanna	290	5 %	310	10 %	290	4 %	153	0 %
158471018013169	Yaseen Nadaf	325	9 %	270	6 %	325	8 %	100	0 %
158471018104051	Yash Sinha	535	72 %	665	96 %	565	84 %	367	28 %
158471018031463	Yashas L	735	99 %	385	26 %	555	81 %	100	0 %
158471018588508	Yashaswini K R	405	28 %	210	2 %	425	35 %	207	2 %
158471018579287	Yashaswini K	440	39 %	415	35 %	375	19 %	207	2 %
158471018068154	Yashaswini S	640	94 %	-	-	480	56 %	207	2 %
158471018637413	Yashaswini A	500	61 %	385	26 %	445	42 %	367	28 %
158471018774549	Yashaswini H	360	16 %	475	55 %	325	8 %	420	48 %
158471018323529	Yashika Pawar	650	95 %	325	13 %	395	24 %	260	5 %
158471018050477	Yashodha Tambaku	325	9 %	430	40 %	315	7 %	527	84 %
158471018436079	Yashraj Goudar	510	64 %	385	26 %	485	58 %	153	0 %
158471018910632	Yashwanth S	675	97 %	490	60 %	325	8 %	207	2 %
158471018461600	Yashwanth Vm	430	36 %	310	10 %	420	33 %	367	28 %
158471018370988	Yashwanth E V	335	11 %	120	0 %	315	7 %	153	0 %
158471018055809	Yashwanth.v Yashwanth.v	245	2 %	195	1 %	385	21 %	207	2 %
158471018805114	Yathin M.p	290	5 %	180	1 %	420	33 %	260	5 %
158471018836278	Yathish T	440	39 %	180	1 %	340	11 %	313	13 %
158471018233367	Yeshaswini C	545	75 %	325	13 %	420	33 %	207	2 %
158471018048559	Yogesh N	420	32 %	340	16 %	340	11 %	420	48 %
158471018203992	Yuvaraj Kaginelli	700	98 %	445	45 %	485	58 %	367	28 %
158471018722395	Zabiulla D	335	11 %	325	13 %	310	6 %	367	28 %

## II. Statistical Significance (Confidence)

All score distributions generally follow a pattern called the Gaussian curve. The Gaussian curve is by far the most common assumption with regard to score distribution. For the purpose of comparison, we express AMCAT scores as Gaussian distribution. The most characteristic feature of this distribution is that the scores for maximum number of students fall in a very narrow range around the average value.

The percentage of scores lying in the range falls exponentially as we move away from the average value. The confidence percentage, which ranges from 0% to 100%, is indicative of the possibility that the difference in scores is by chance. A high confidence percentage indicates that it is very likely that the difference observed is real and not by chance. In this analysis, we classify differences, with confidence 90% or higher, as significantly different (that is, not by chance).

## III. National Average (Norm)

To construct the norms (National average & standard deviation), balanced sampling was used to select more than 25000 students tested by Aspiring Minds nationwide. Balanced sampling technique ensures that the selected candidates are representative of entry-level job-aspirants over 22 states in India. It is ensured that the sample contains different degrees, specializations, genders, regions, etc. in the same composition as the National distribution.

To summarize score distribution of the norms and Dr Ambedkar Institute of engineering students, two values (statistics) are used: average of the scores and standard deviation of the scores. While the former value indicates what, on average, candidates score in the test, the latter value tells how much do scores deviate from the average. High value of standard deviation means that the scores are dissimilar and spread across the scale. In contrast, a low value of standard deviation means that candidates scores are similar to each other and lie near the average.

## IV. Variance (Standard Deviation)

The variance (or standard deviation) is a measure of how spread out a distribution is. In other words, it is the measure of variability. A low standard deviation indicates that the data points tend to be very close to the average value, while high standard deviation indicates that the data is spread out over a large range of values.

## V. About Aspiring Minds

Aspiring Minds was founded in 2007 by alumni of IIT and MIT (USA) with a vision to introduce scientific assessment methodology to bring together job-seekers and campuses across India on a common standardized platform that is recognized by multiple companies on a national level. The aim of Aspiring Minds is to highlight the pool of talented students and progressive campuses to corporates nationally, provide an insight on how they can improve their employability and help them acquire jobs on the basis of their potential. In a short span of time, Aspiring Minds has earned credibility and is working with multiple corporations such as Microsoft Research, HCL Technologies, MPhasiS EDS, Ericsson, Tata Motors, Aricent, Genpact, iGATE, L&T Finance, Sapient, Godrej Agrovet and Tavant Technologies.

## **Board of Advisors**

Prof. Tarun Khanna, HBS, USA

Dr. Una-May O'Reilly, MIT, USA

Dr. Vijay Bhushan, PhD., UIUC, USA